



MATHS



- APPROXIMATION
- WRONG SERIES
- QUADRATIC EQUATION
- WORD PROBLEM

तैयारी **TOPPERS** वाली

LIVE | 11:30 AM

By **Shubham Mahendras**





UPCOMING ONLINE BATCHES

September 2022

07 SEP 2022

01:00 PM to 03:00 PM

BANK ONLINE LIVE CLASS

10:30 AM to 12:30 PM

SSC ONLINE LIVE CLASS

BILINGUAL

14 SEP 2022

08:00 AM to 10:00 AM

BANK ONLINE LIVE CLASS

05:30 PM to 07:30 PM

SSC ONLINE LIVE CLASS

BILINGUAL

21 SEP 2022

10:30 AM to 12:30 PM

BANK ONLINE LIVE CLASS

03:00 PM to 05:00 PM

SSC ONLINE LIVE CLASS

BILINGUAL

28 SEP 2022

07:30 PM to 09:30 PM

BANK ONLINE LIVE CLASS

08:00 AM to 10:00 AM

SSC ONLINE LIVE CLASS

BILINGUAL

14 SEP 2022

11:30 AM to 01:30 PM

BANK ONLINE LIVE CLASS

BENGALI+ENGLISH

28 SEP 2022

04:00 PM to 06:00 PM

BANK ONLINE LIVE CLASS

BENGALI+ENGLISH



www.mahendras.org



7052477777/7052577777



Surbhi Sinha 19 hours ago

H/w=1,,, option C(D),,,,, h/w,=2optionA(a) thank you sir 👍👍 bahut badhiya trick tha di ka thank u hamare doubts clear karne ke liye d i se hamara Dard dur karne ke liye 🙌



Priya Bharati 12 hours ago

HW Answer

1) option C

2) option A

Nd thks sir concept clear krne k liye..



Tanisha p 15 hours ago

Wonderful session sir 👍

Thank you sir 🙌

Aaj ki DI ki class ke baad sure ab exam DI nahi chodenge bs practice acche se karenge 🙌🙌

HW--- Q1--- opt C (((D))))

Q2 -- opt A (((A))))



Sneha Dey 18 hours ago

Opt C&A ans

Thank you sir.. Bohut easy laga maza aa gya.. Aap sath hai toh sab easy 🙌



PUJA KUNDU ----- 20 hours ago

The answer's of H.W

1 -D...2-A....pie chart mast the thank you sir for the amazing session 🙌



swagata dey 14 hours ago

Hw 1-option C and Hw -2 option A thank you sir itni ache DI practice karane ke liye 😊😊😊



Shefali Thakur 21 hours ago

Answer:

Question 1: (3)D

Question 2: (1)A



Keka Maiti 20 hours ago

ANSWER

OPTION C - D

OPTION A - A



Nitika Gupta 21 hours ago

Homework

Option (d,a)



Atigya Garg 21 hours ago

Hw 1 - Option C (D)

Hw - 2 - Option A (A)

Thank you sir 🙌...



Neha Singh 21 hours ago

Pie chart

Question 1 (3)D

Question 2(1)A



SHYANI MONDAL 12 hours ago

1St - option c-D

2Nd - option a-A



Shubhi Bajpai 17 hours ago

Suprb session sr 👍



ĀTŪL_VĒRMĀ 8 hours ago

Option C(D) nd A(A)..... 🙌🙌



Niharika Jha 13 hours ago

Homework answer: option C and option A



Simran Chauhan 21 hours ago

Homework answer is

Ist. Option C

Second. Option A

Thank you so much sir for this amazing session 🙌🙌



Mansi Bisht 21 hours ago

Pie chart trick was awesome (ans D, A)



Sakshi Juneja 18 hours ago

hw answer 1opt C

answer 2 opt A

thanku for the wow session n ab sir DI se darenge ni question ko darenge 😊



$$(4.012)^3 + (29.997)^2 = ?$$



- A.1925
- B.965
- C.745
- D.756
- E.805

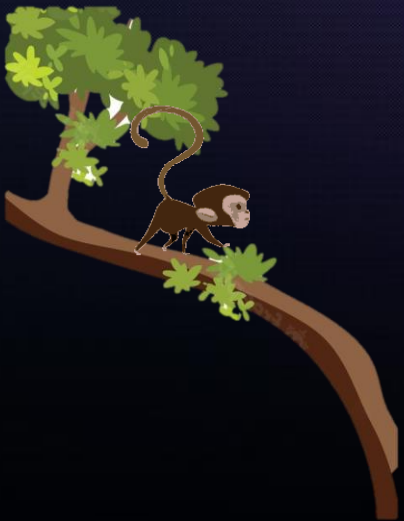




$$(780.85 + 59.98) \div 29.02 = ?$$



- A.29
- B.9
- C.39
- D.44
- E.13



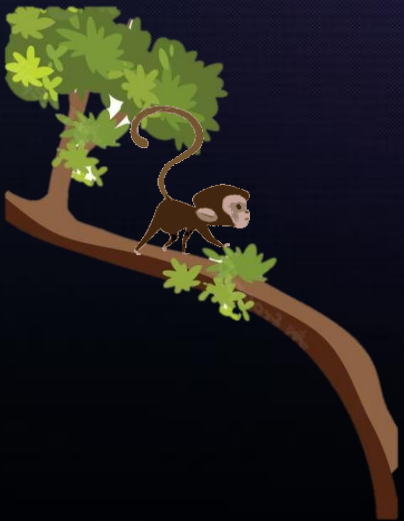


$$3x^2 - 8x - 16 = 0$$



$$3y^2 - 19y + 28 = 0$$

- A. $X > Y$
- B. $X < Y$
- C. $X \geq Y$
- D. $X \leq Y$
- E. $X = Y$
or CND

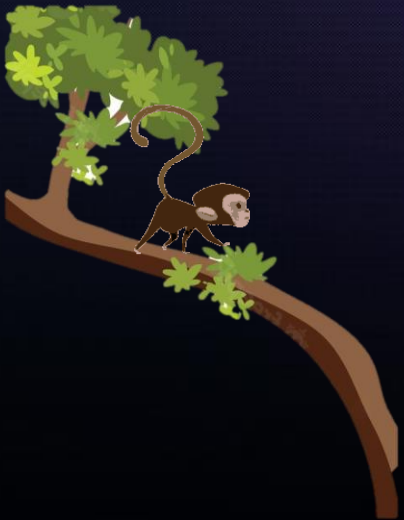




1, 3, 6, 10.5, 16, 26



- A.1
- B.6
- C.26
- D.3
- E.16





$$\sqrt{10607} \times \sqrt{9603} - (42.02)^2 = ? + (52.91)^2$$



A.4915

B.6323

C.7747

D.5521

E.13623



The simple interest on an amount invested at 12% per annum for 5 years is double than the compound interest on 4000rs for 2 years at 10% per annum.



Find the amount invested under simple interest ?

5 वर्षों के लिए 12% प्रति वर्ष की दर से निवेश की गई राशि पर साधारण ब्याज 10% प्रति वर्ष की दर से 2 वर्षों के लिए 4000 रुपये पर चक्रवृद्धि ब्याज से दोगुना है। साधारण ब्याज के तहत निवेश की गई राशि ज्ञात कीजिये?



A.2500

B.2800

C.2600

D.2700

E.3200



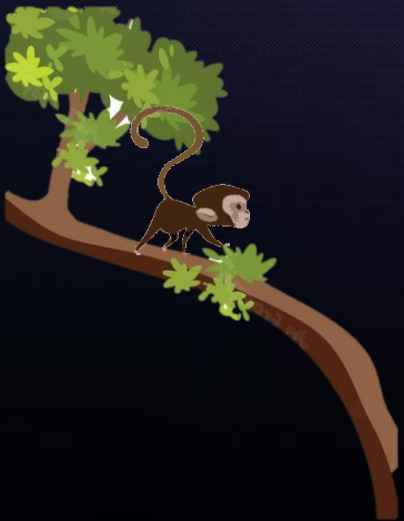


$$4x^2 - 9x - 9 = 0$$



$$15y^2 - 29y + 12 = 0$$

- A. $X > Y$
- B. $X < Y$
- C. $X \geq Y$
- D. $X \leq Y$
- E. $X = Y$
or CND





$$(25.16 \times 16.01) \div (12 \times 18.94) + 24.10 + \sqrt{37} \times \sqrt{2.26} = ?$$



A.25

B.35

C.45

D.50

E.55



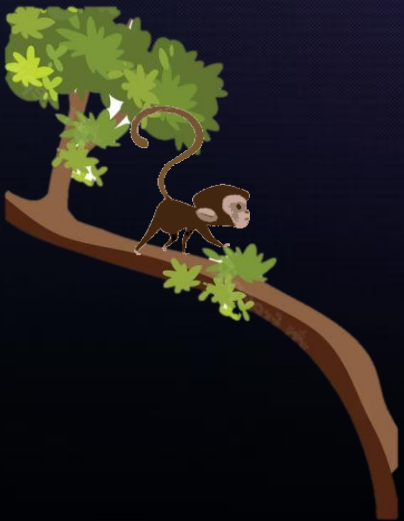


$$6x^2 - 7x + 2 = 0$$



$$2y^2 - 5y + 3 = 0$$

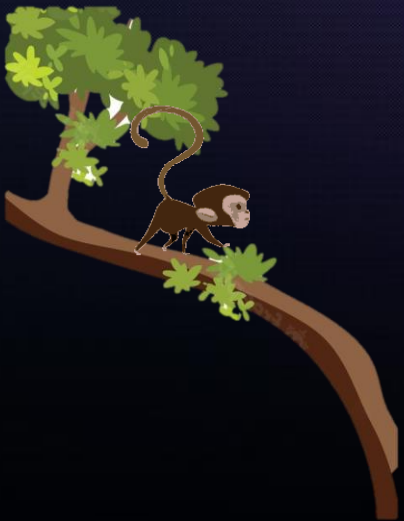
- A. $X > Y$
- B. $X < Y$
- C. $X \geq Y$
- D. $X \leq Y$
- E. $X = Y$
or CND



$$(17.99)^2 - 14.05^2 + \{(2343.05 + 81.05) / ?\} = 229$$

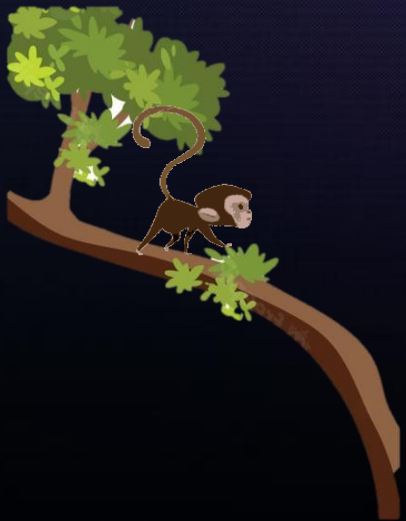


- A.8
- B.46
- C.76
- D.24
- E.56



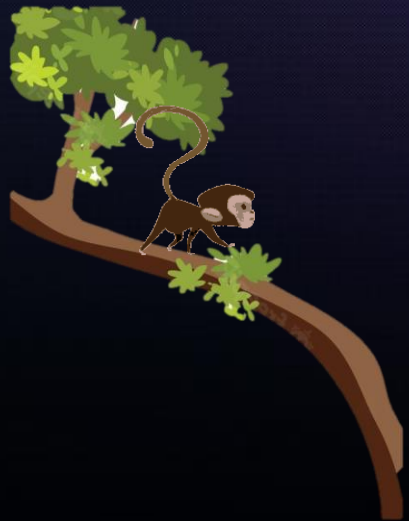


12, 13, 9, 36, 20, 147



- A.12
- B.13
- C.36
- D.20
- E.147

$$\sqrt{4220} \times 197.78 \times 22.071 = ? \times 169.24 \times 109.88$$



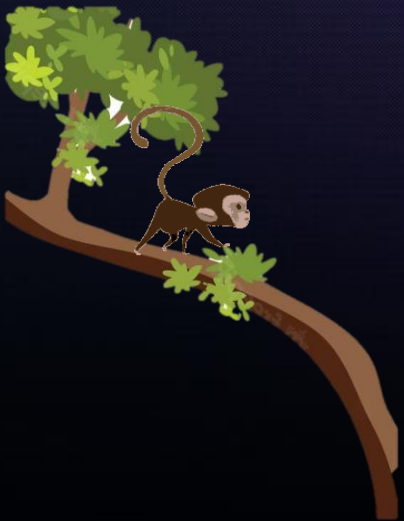
- A.6
- B.15
- C.24
- D.35
- E.40

$$X^2 - 8\sqrt{3}X + 45 = 0$$



$$Y^2 - \sqrt{2}Y - 24 = 0$$

- A. $X > Y$
- B. $X < Y$
- C. $X \geq Y$
- D. $X \leq Y$
- E. $X = Y$
or CND





4, 2, 3, 7.5, 27.25, 118.125



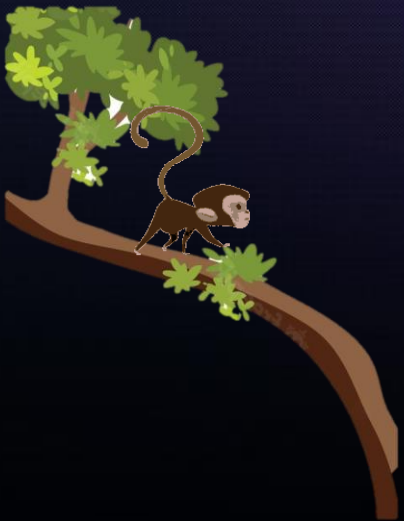
A.4

B.118.125

C.7.5

D.27.5

E.3



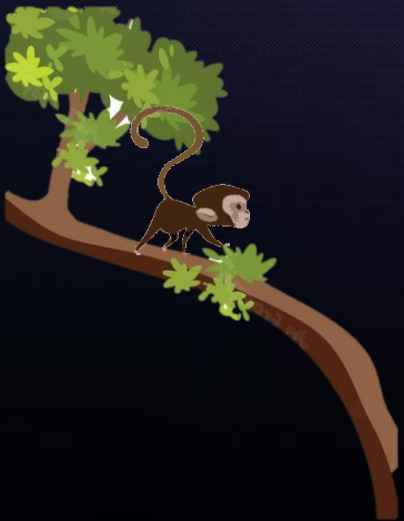


$$5x^2 - 31x + 44 = 0$$



$$2.5y^2 - 15y - 17.5 = 0$$

- A. $X > Y$
- B. $X < Y$
- C. $X \geq Y$
- D. $X \leq Y$
- E. $X = Y$
or CND





$$(134.99 \times 9.01 \times 14400^{1/2}) \div 99.99 = ?$$



- A.1458
- B.1270
- C.1586
- D.1798
- E.1904





$$(\sqrt{2501})\% \text{ of } 500 - ?^2 - (\sqrt{2027})\% \text{ of } 215.32 = 50 - 15.34$$



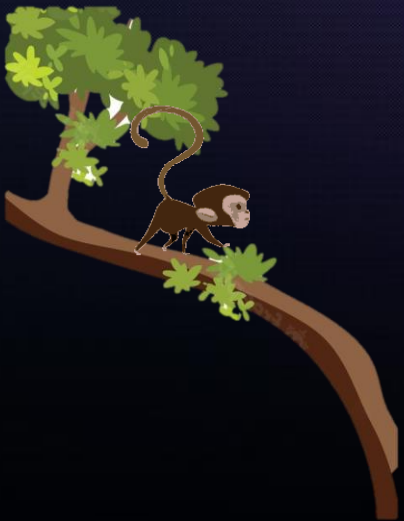
- A.11
- B.121
- C.144
- D.27
- E.35



$$\sqrt{(2602)} \div 16.99 + \sqrt{(1225.20)} \times 5.01 \div 24.99 = ?^2 - 88.89$$



- A.25
- B.5
- C.100
- D.10
- E.7



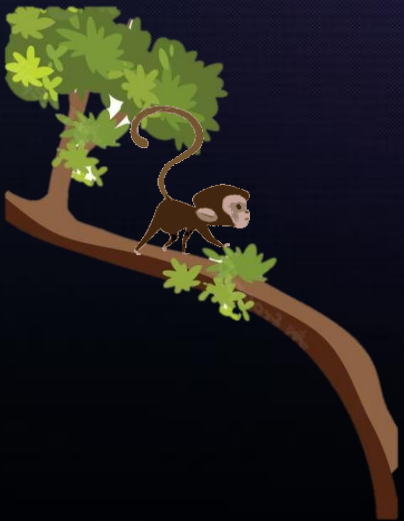


$$5x^2 - 91x + 102 = 0$$



$$7y^2 - 130y + 187 = 0$$

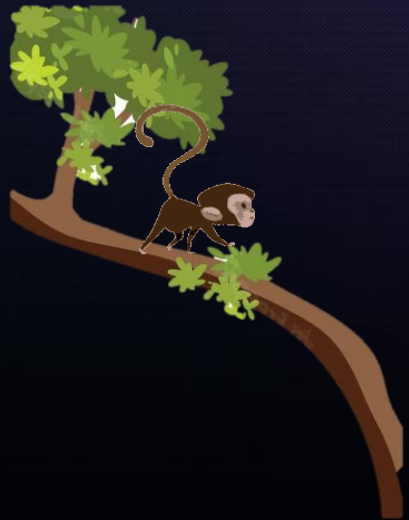
- A. $X > Y$
- B. $X < Y$
- C. $X \geq Y$
- D. $X \leq Y$
- E. $X = Y$
or CND





What is the maximum percentage discount that a shopkeeper can offer on his marked price so that he ends up selling at no profit or loss, if he had initially marked his goods up by 40%?

एक दुकानदार अपने अंकित मूल्य पर अधिकतम कितने प्रतिशत की छूट दे सकता है ताकि वह बिना किसी लाभ या हानि के बिक्री करे, यदि उसने शुरू में अपने माल को 40% तक चिह्नित किया था?



- A. 20%
- B. 23.5%
- C. 28.5%
- D. 34.5%
- E. 40%

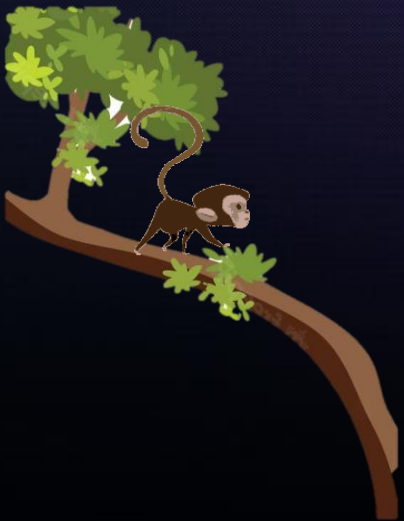


$$X^2 - 11\sqrt{7}X + 210 = 0$$



- A. $X > Y$
- B. $X < Y$
- C. $X \geq Y$
- D. $X \leq Y$
- E. $X = Y$
or CND

$$Y^2 - 11\sqrt{6}Y + 168 = 0$$

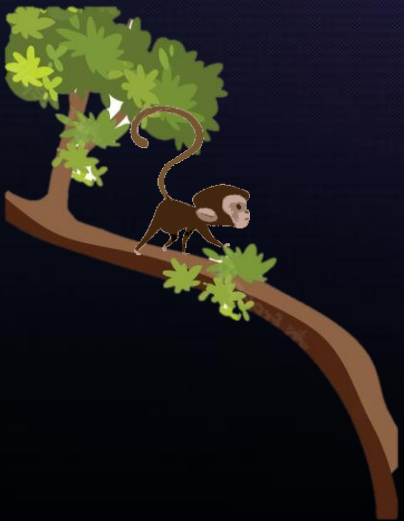




101, 108, 132, 190, 299, 475



- A.101
- B.475
- C.132
- D.299
- E.108

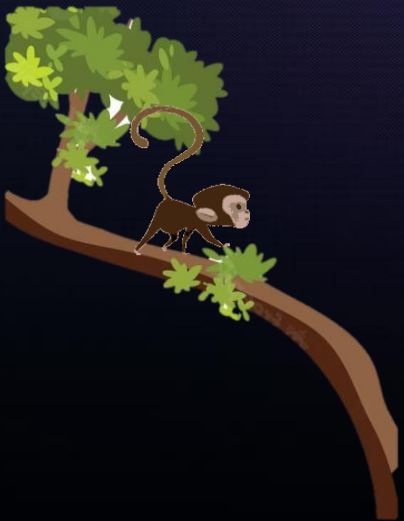




$$35\% \text{ of } ? \times (3 / 4) = 3984.75$$



- A.12720
- B.18480
- C.15180
- D.17460
- E.13220





24, 30, 48, 90, 158, 294



- A.294
- B.158
- C.90
- D.48
- E.30



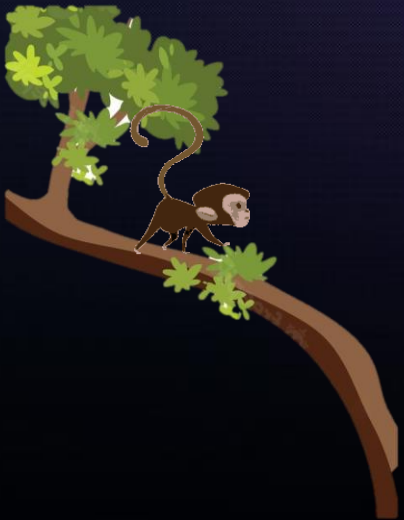
A pen costs 600 Rs if whole payment is made in cash . If pen is bought at EMI then down payment comes at Rs 200 and then 6 equal monthly investments for Rs 80. Find rate percentage?



एक पेन की कीमत 600 रुपये है यदि पूरा भुगतान नकद में किया जाता है। अगर ईएमआई पर पेन खरीदा जाता है तो डाउन पेमेंट 200 रुपये पर आता है और फिर 80 रुपये में 6 बराबर मासिक निवेश होता है। दर प्रतिशत ज्ञात करें?



- A.20
- B.50
- C.80
- D.5
- E.NOT



If the length of a rectangle is increased by 40% then what % of its breadth will be reduce for 10% decrement in its area?



यदि एक आयत की लंबाई में 40% की वृद्धि की जाती है, तो उसके क्षेत्रफल में 10% कम करने पर उसकी चौड़ाई का कितना प्रतिशत कम हो जाएगा?



A.30

B.20

C.10

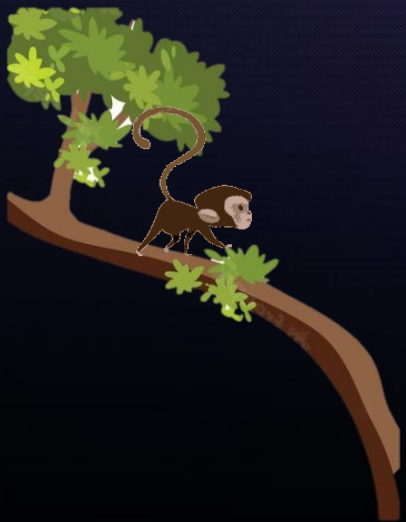
D.40

E.NOT



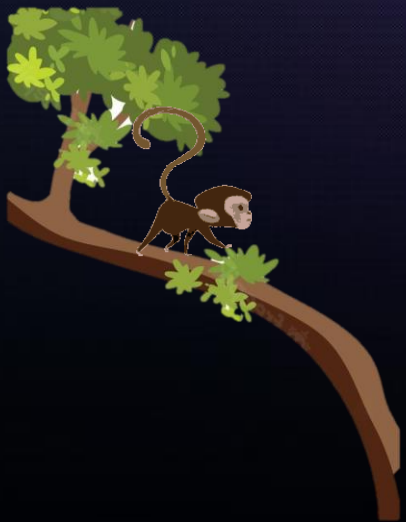


A.a



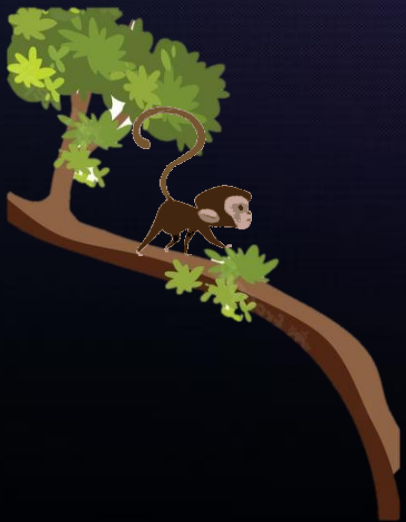


A.a





A.a





A.a

