



MATHS



- CASELET DI
- APPROXIMATION
- NUMBER SERIES
- QUADRATIC EQUATION

तैयारी **TOPPERS** वाली

LIVE | 11:30 AM

By Shubham Mahendras





UPCOMING ONLINE BATCHES

September 2022

07 SEP 2022

01:00 PM to 03:00 PM

BANK ONLINE LIVE CLASS

10:30 AM to 12:30 PM

SSC ONLINE LIVE CLASS

BILINGUAL

14 SEP 2022

08:00 AM to 10:00 AM

BANK ONLINE LIVE CLASS

05:30 PM to 07:30 PM

SSC ONLINE LIVE CLASS

BILINGUAL

21 SEP 2022

10:30 AM to 12:30 PM

BANK ONLINE LIVE CLASS

03:00 PM to 05:00 PM

SSC ONLINE LIVE CLASS

BILINGUAL

28 SEP 2022

07:30 PM to 09:30 PM

BANK ONLINE LIVE CLASS

08:00 AM to 10:00 AM

SSC ONLINE LIVE CLASS

BILINGUAL

14 SEP 2022

11:30 AM to 01:30 PM

BANK ONLINE LIVE CLASS

BENGALI+ENGLISH

28 SEP 2022

04:00 PM to 06:00 PM

BANK ONLINE LIVE CLASS

BENGALI+ENGLISH



www.mahendras.org



7052477777/7052577777



Surbhi Sinha 3 hours ago
 Option Eee Not ,, right answer is 12.50 ,, thank you sir 👍👍 bahut increase ho rha h speed or doubt clear ho rha h ,,
 Shubham sir Rocks 🍷🌸



Shefali Thakur 11 hours ago
 Answer:
 12.5
 E) NOT



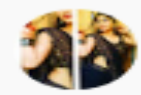
Sneha Dey 10 hours ago
 Hw ans none of these.. Thank you sir.. 🙏
 Si&ci ka ek session layiye sir.. Aur speed v inc. Ho raha h sir thank you so much..



Sanika Kokane 7 hours ago
 Option = E
 Bcoz ans is 12.5 aa raha hain...



Mimansha 26 minutes ago
 Ans - opt e (not)



Simran Chauhan 11 hours ago
 Homework answer is- option E - NOT 12.5
 Thank you sir for this amazing session 🙏🙏



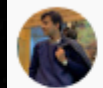
Prachi Singh 9 hours ago
 $1.75 + 6.75 + 4 = x$
 $x = 12.5$ so the answer is none of these sir



Muskan Rai 11 hours ago
 answer - e (not)
 thank u sir for wonderfull session
 sir please explain caslet di full



Niharika Jha 10 hours ago
 Thank you for the session sir ✨ ✨
 Homework answer ::
 option E NOT
 12.5 correct answer



Atigya Garg 11 hours ago
 Ans : option E (NOT)
 THANK YOU SIR JI 😊 ✨



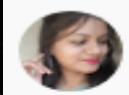
#Hrithik 2 hours ago
 CND



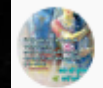
Nitika Gupta 10 hours ago
 Homework
 Cnd



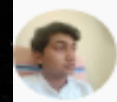
cpy vlogs 6 hours ago
 E



Nitu Maurya 11 hours ago
 ANS...NOT
 RIGHT ANS 12.50
 AWESOME SESSION SIR
 THANKU SO MUCH.



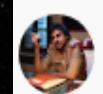
RADHEY 10 hours ago
 HW ans EEEE 12.5
 THNK U SR 🙏🙏
 NYC SEASON 🙏🙏 SR



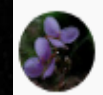
Rajat Sahu 31 minutes ago
 Homework ans - NOT



Priya Bharati 10 hours ago
 H. W answer- option (E) - NOT
 Right Answer is 12.50



Aniket Kaithwas 11 hours ago
 12.50



Rakesh Prasad 10 hours ago
 Thank you sir... Opt... E



Neha Singh 11 hours ago
 Homework ans CND



$$77.003 \times 13.998 + 18.04 \times 14.996 = ?$$



- A.1380
- B.1355
- C.1212
- D.1419
- E.2154



$$3x^2 - 39x + 120 = 0$$



$$y^2 - 23y + 112 = 0$$

- A. $X > Y$
- B. $X < Y$
- C. $X \geq Y$
- D. $X \leq Y$
- E. $X = Y$
or CND





$$\frac{340}{20.002} \div \frac{29.997}{510} \times \frac{179.909}{59.919} = ?$$



- A.396
- B.570
- C.288
- D.455
- E.875





71, 79, ?, 134, 109, 325



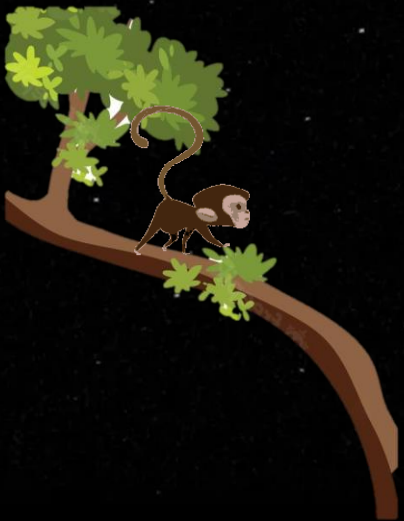
A.72

B.84

C.80

D.70

E.NOT



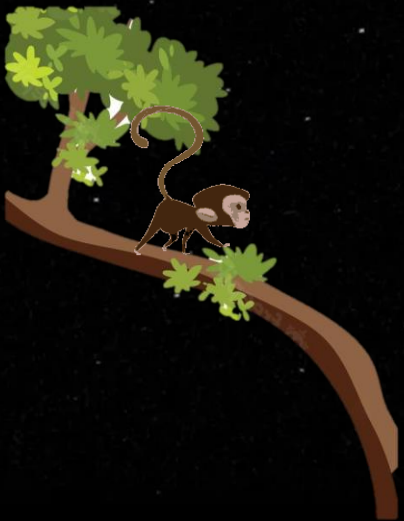


$$50x^2 - 60x + 16 = 0$$



$$20y^2 - 32y + 12 = 0$$

- A. $X > Y$
- B. $X < Y$
- C. $X \geq Y$
- D. $X \leq Y$
- E. $X = Y$
or CND





$$(7.02)^2 \times (196)^{1/2} \times (31.98)^2 \div \{(7.01)^3 \times (16.02)^2\} = ?$$



A.5

B.7

C.8

D.10

E.12





$$30x^2 - 44x + 16 = 0$$



$$24y^2 - 4y - 4 = 0$$

- A. $X > Y$
- B. $X < Y$
- C. $X \geq Y$
- D. $X \leq Y$
- E. $X = Y$
or CND

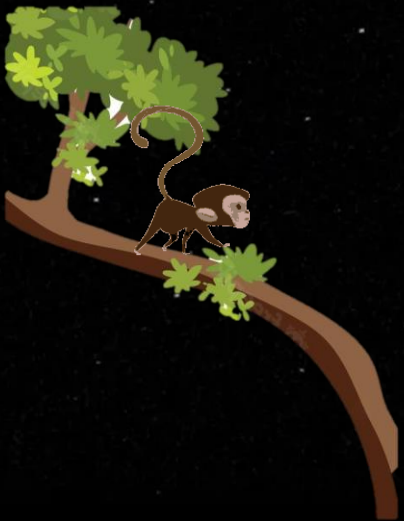




$$\sqrt{2498.98} \times \sqrt{623.991} \div \sqrt{98.91} \div \sqrt{26.01} = ?$$



- A.6
- B.8
- C.25
- D.10
- E.15





$$16x^2 + 20x + 6 = 0$$



$$10y^2 + 38y + 24 = 0$$

- A. $X > Y$
- B. $X < Y$
- C. $X \geq Y$
- D. $X \leq Y$
- E. $X = Y$
or CND





$$19.98 \% \times \sqrt{99.89} + \sqrt[4]{1295.87} \times \sqrt[4]{81.15} = ?$$



- A.12
- B.14
- C.20
- D.24
- E.27



960, 240, ?, 225, 393.75



- A.175
- B.180
- C.195
- D.196
- E.200





$$(20.015 \times 12.025 + 4.984 \times 8.021 \div 3.987) \div 24.955 = ?$$



- A.2
- B.4
- C.7
- D.10
- E.16



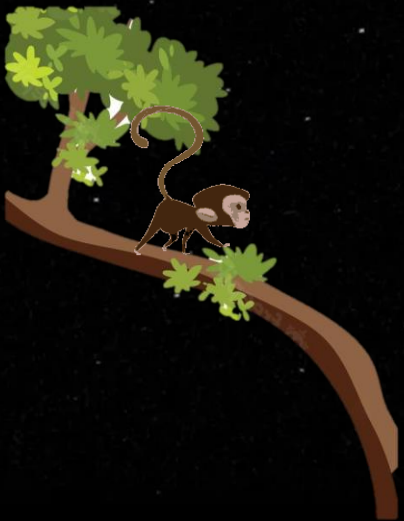


$$18x^2 + 18x + 4 = 0$$



$$12y^2 + 29y + 14 = 0$$

- A. $X > Y$
- B. $X < Y$
- C. $X \geq Y$
- D. $X \leq Y$
- E. $X = Y$
or CND





$$52000.201 \div 59.999 \times 30.3164 = ? \times 13.2303$$



- A. 2000
- B. 4000
- C. 6000
- D. 9000
- E. 12000





120, ?, 40, 30, 24, 20



- A.120
- B.75
- C.60
- D.45
- E.90

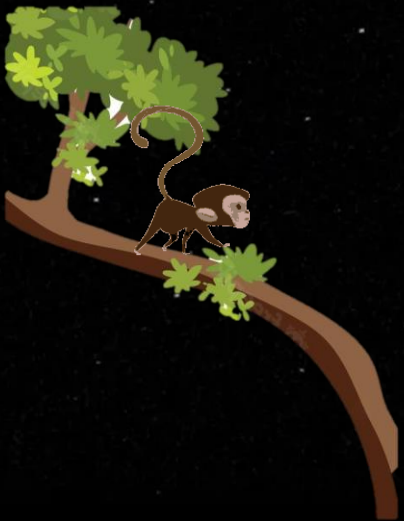




9.09 % of 1334 + 14.30 % of 2100 = ?



- A.310
- B.420
- C.490
- D.512
- E.560





23.6, 147.6, ?, 2976, 8931



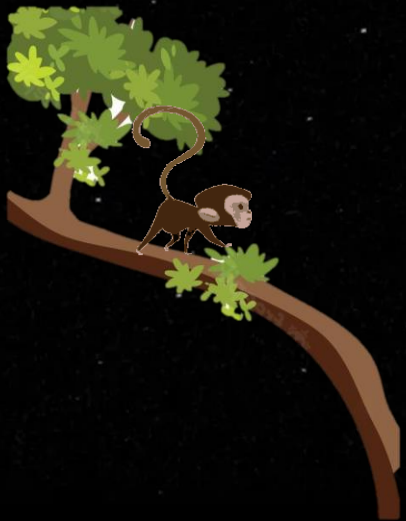
A.733

B.743

C.622

D.535

E.262





$$(34.9)^2 \div 7 + \sqrt{?} = 217.02$$



- A.1200
- B.1400
- C.1750
- D.2000
- E.2220





1125, 5626, 1405.5, ?, 2107.75



- A. 4242.5
- B. 4232.25
- C. 2737.5
- D. 4217.5
- E. 3127.25





$$15.003^2 + 23.98^2 - 5.98^2 - ? = 1282.998 - 978.898$$



- A.460
- B.570
- C.340
- D.820
- E.270





In a survey 3000 persons in a city, it was found that each person is playing from at least one of the three games i.e. cricket, football and hockey. Number of person who are playing cricket only are 25 % more than the number of person who playing football only. Number of person who are playing hockey only are 120% of the number of person who are playing cricket only cricket. Number of person who are playing all the sports are $\frac{1}{3}$ rd of the number of person who are playing cricket only. Number of person who are playing both cricket and football (but not hockey) are 20 more than the number of person who are playing all three sports and 190 more than the number of person who are playing both cricket and hockey (but not football). 400 people are playing both football and hockey.



एक शहर में 3000 व्यक्तियों के एक सर्वेक्षण में यह पाया गया कि प्रत्येक व्यक्ति तीन खेलों में से कम से कम एक खेल यानी क्रिकेट, फुटबॉल और हॉकी खेल रहा है। केवल क्रिकेट खेलने वाले व्यक्तियों की संख्या केवल फुटबॉल खेलने वाले व्यक्तियों की संख्या से 25% अधिक है। केवल हॉकी खेलने वाले व्यक्तियों की संख्या केवल क्रिकेट खेलने वाले व्यक्तियों की संख्या का 120% है। सभी खेल खेलने वाले व्यक्तियों की संख्या केवल क्रिकेट खेलने वाले व्यक्तियों की संख्या का $\frac{1}{3}$ है। क्रिकेट और फुटबॉल दोनों खेल रहे (लेकिन हॉकी नहीं) व्यक्तियों की संख्या, तीनों खेल खेलने वाले व्यक्तियों की संख्या से 20 अधिक है और क्रिकेट और हॉकी दोनों खेल रहे (लेकिन फुटबॉल नहीं) दोनों खेल रहे व्यक्तियों की संख्या से 190 अधिक है। 400 लोग फुटबॉल और हॉकी दोनों खेल रहे हैं।

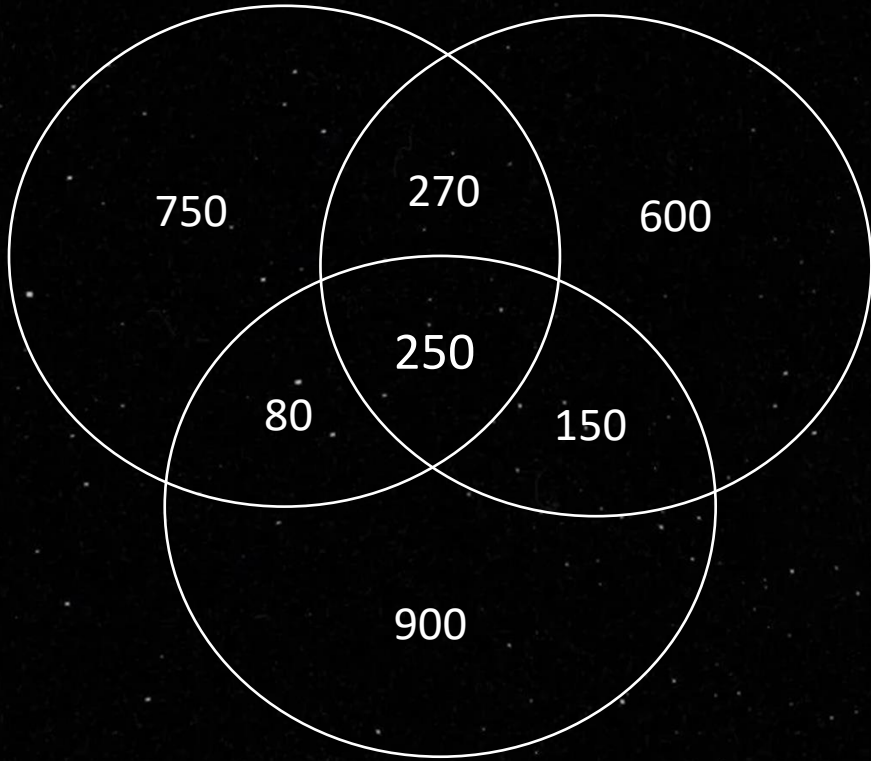


In a survey 3000 persons in a city, it was found that each person is playing from at least one of the three games i.e. cricket, football and hockey. Number of person who are playing cricket only are 25 % more than the number of person who playing football only. Number of person who are playing hockey only are 120% of the number of person who are playing cricket only cricket. Number of person who are playing all the sports are $\frac{1}{3}$ rd of the number of person who are playing cricket only. Number of person who are playing both cricket and football (but not hockey) are 20 more than the number of person who are playing all three sports and 190 more than the number of person who are playing both cricket and hockey (but not football). 400 people are playing both football and hockey.



Find the difference between who are playing only hockey to the number of people who are playing only cricket ?

केवल हॉकी खेलने वाले व्यक्तियों की संख्या और केवल क्रिकेट खेलने वाले व्यक्तियों की संख्या के बीच का अंतर ज्ञात कीजिये?

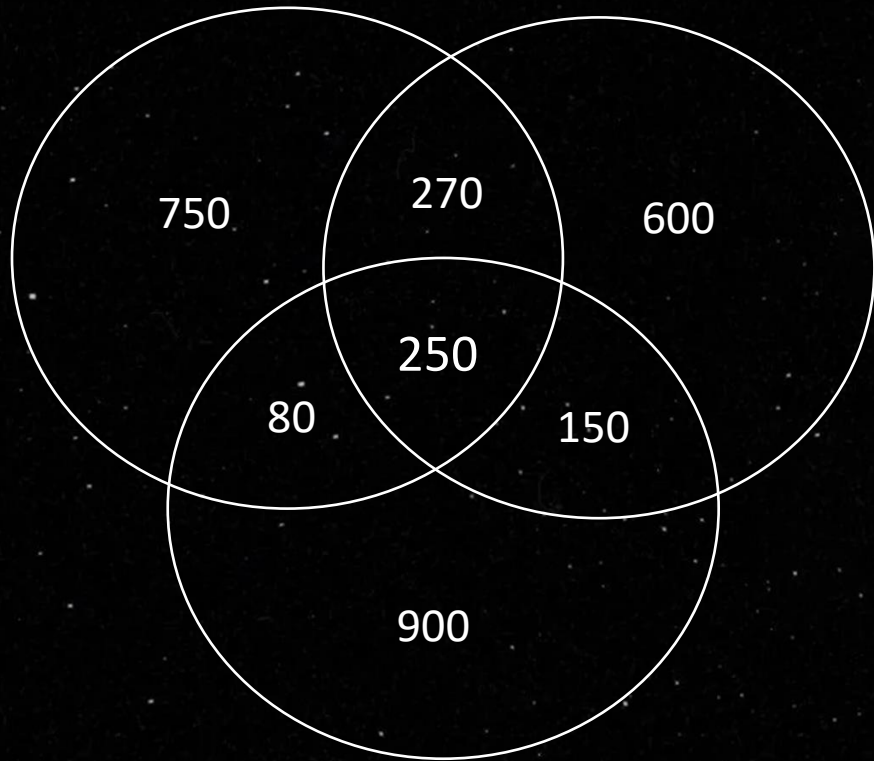


- A.30
- B.40
- C.90
- D.60
- E.NOT



Find the ratio between the number of people who are playing cricket and hockey to the number of person who are playing hockey and football ?

क्रिकेट और हॉकी खेलने वाले व्यक्तियों की संख्या और हॉकी और फुटबॉल खेलने वाले व्यक्तियों की संख्या के बीच का अनुपात ज्ञात कीजिये?

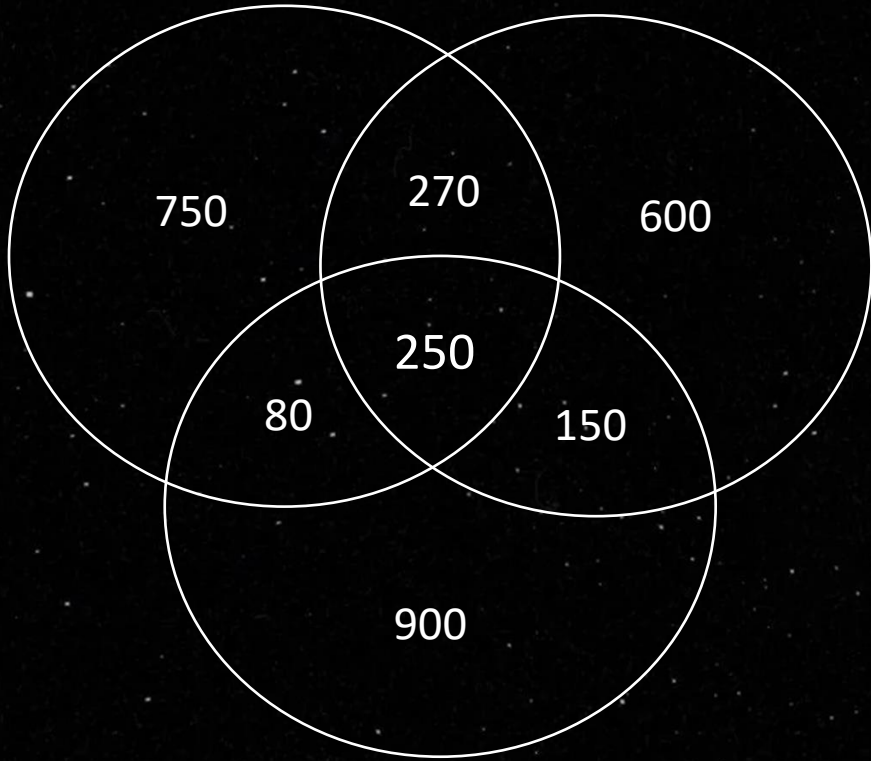


1. 12:5
2. 13:10
3. 7:27
4. 2:11
5. NOT



Find the sum of people who are playing only cricket and only football ?

केवल क्रिकेट और केवल फुटबॉल खेलने वाले व्यक्तियों का योग ज्ञात कीजिये?



A.1350

B.1270

C.1330

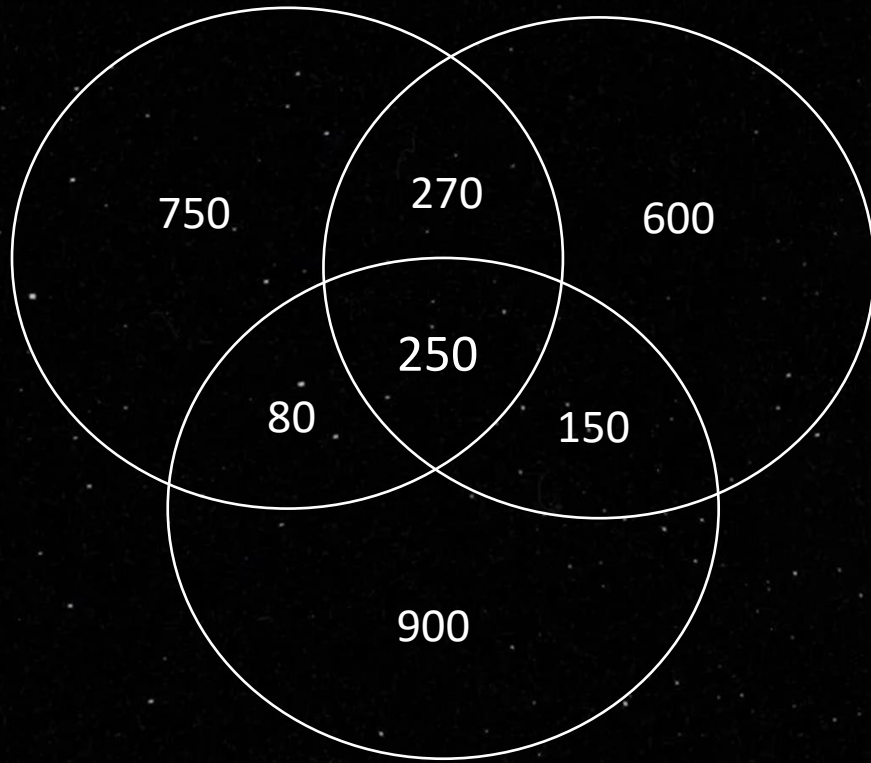
D.1400

E.NOT



Find the difference between the number of people who are playing only cricket and only hockey ?

केवल क्रिकेट और केवल हॉकी खेलने वाले व्यक्तियों की संख्या के बीच का अंतर ज्ञात कीजिये?



A.120

B.150

C.130

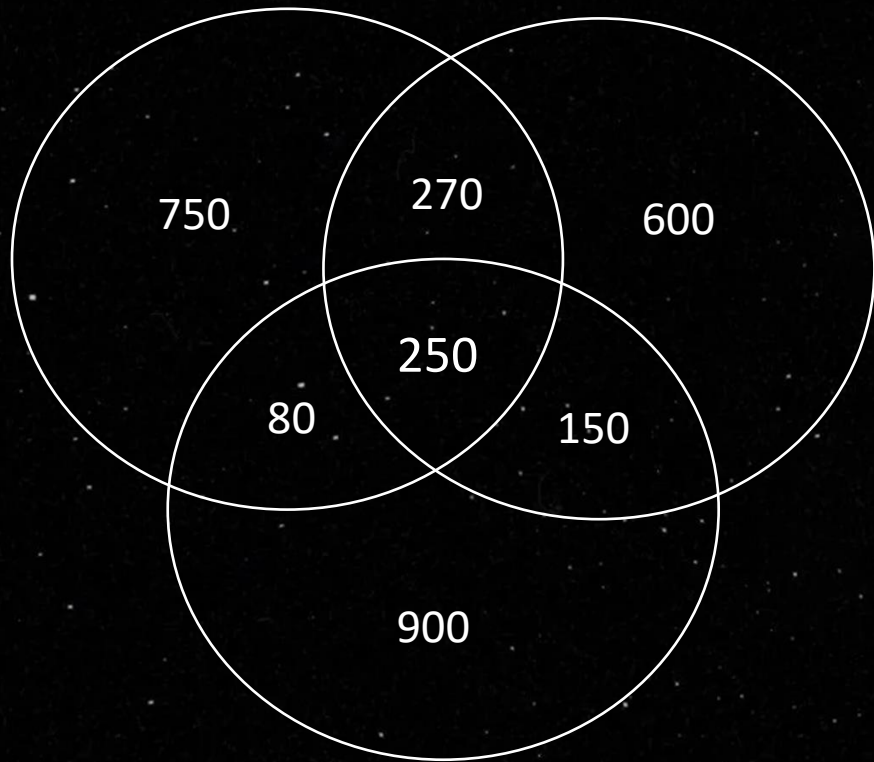
D.140

E.NOT



Find the people who are playing only football and hockey are what percent of the people who are playing only cricket and football ?

केवल फुटबॉल और हॉकी खेलने वाले व्यक्तियों का कितना प्रतिशत है जो केवल क्रिकेट और फुटबॉल खेल रहे हैं?



- A.20
- B.40
- C.50
- D.67
- E.NOT