





WBCS 2022



MATHS

PERCENTAGE

PART-3

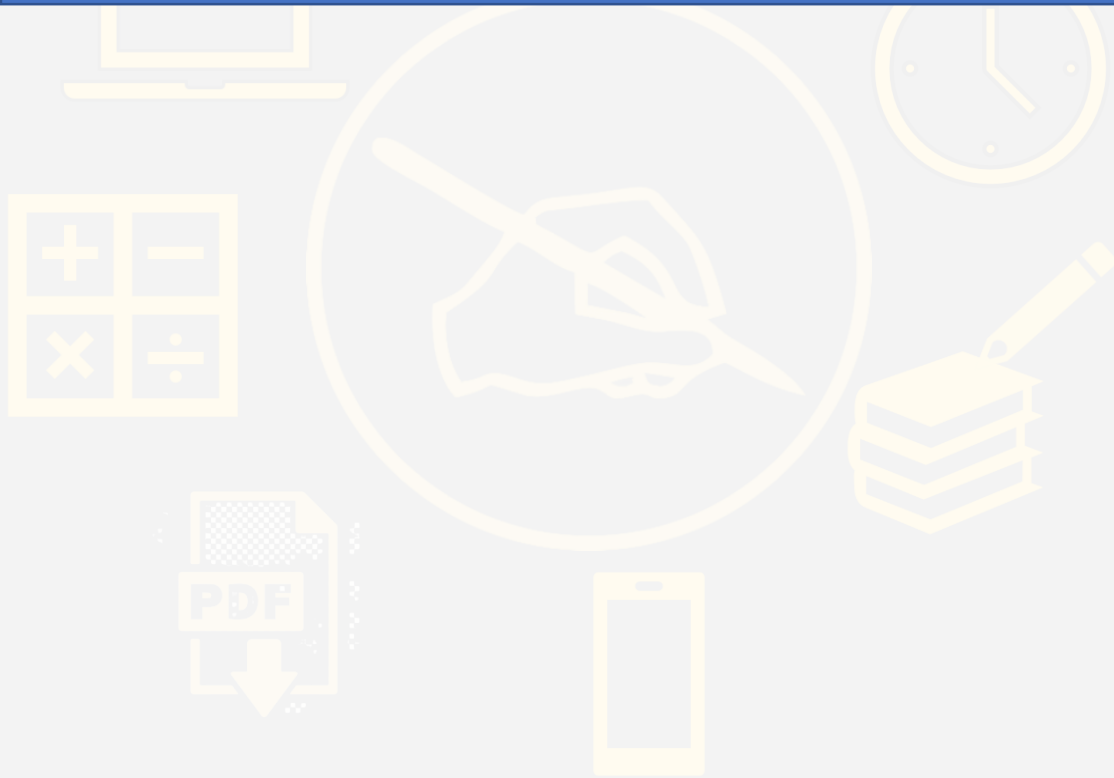


12:30 PM



15 MARCH 2022

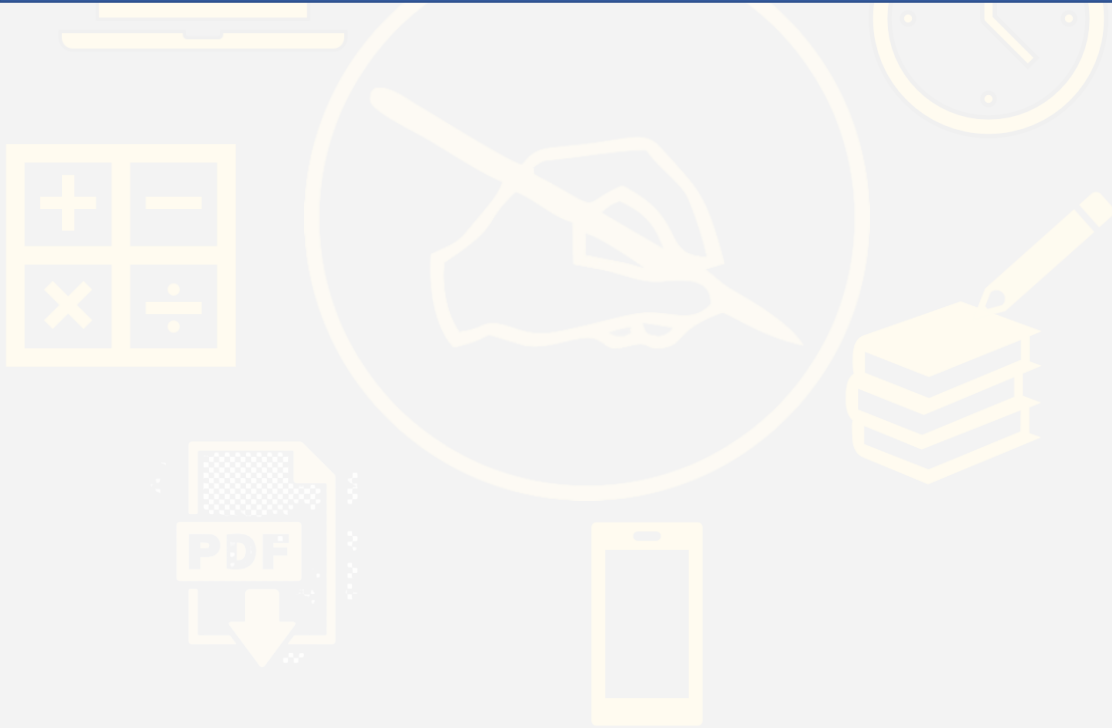
1. A number is multiplied by $\frac{6}{5}$ instead of $\frac{5}{6}$ find out the percentage error in the result ?



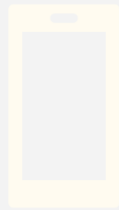
2. A person spends 80% of his income. If his income increases by 19% and the expenditure increases by 30% then find out the percentage change in savings ?



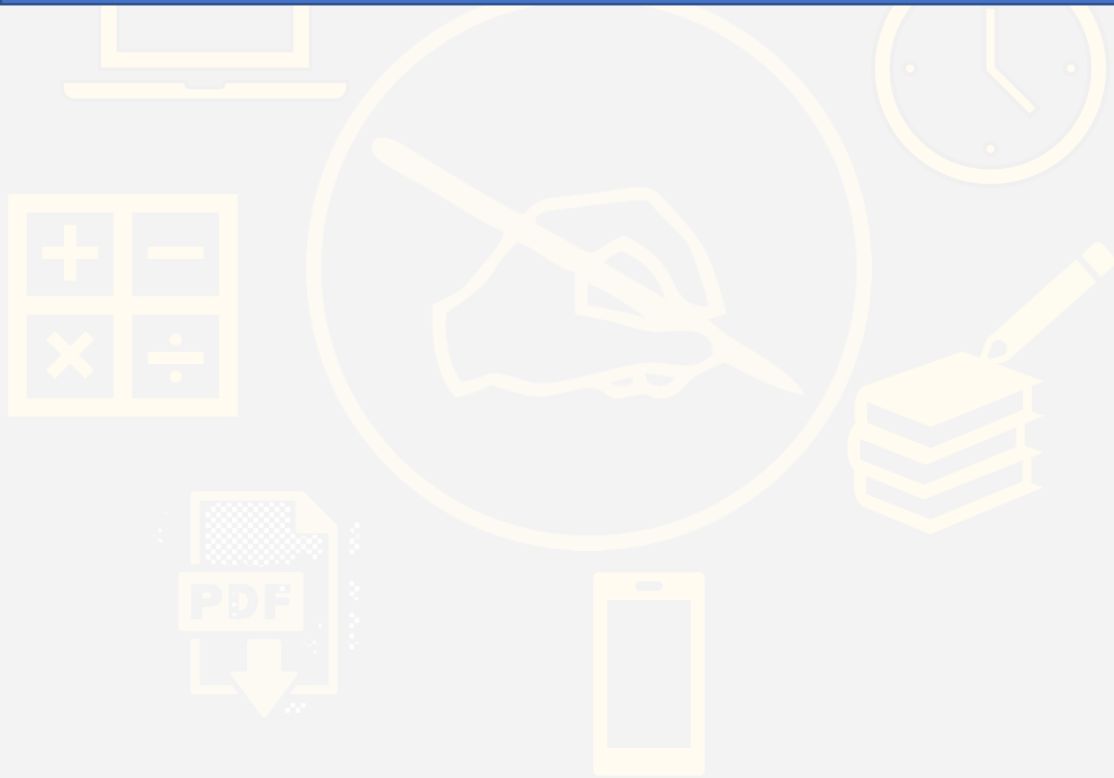
3. In an exam if a student gets 25% marks, he fails by 30 marks and if he gets 65% marks, he got 50 marks more than the minimum passing marks. Find the full marks and the passing percentage ?



4. Fresh fruits contain 80% water and dry fruits contain 20% water. Find how much of dry fruits can be obtained from 60kg fresh fruits ?



5. The population of a village is 6000. if the number of males increases by 5% and the number of females increases by 9% then the population becomes 6500. find the initial number of males and females?





WBCS BATCH 2022



SUMANA MAHENDRAS
(GS)



ANURAG MAHENDRAS
(GA/GS)



BORNON MAHENDRAS
(GA/GS)



SHIRSITA MAHENDRAS
(GA/GS)



VISHAL MAHENDRAS
(MATHS)



AYAN MAHENDRAS
(GS)



SRAYA MAHENDRAS
(ENGLISH)



NITESH MAHENDRAS
(REASONING)



MONDAY TO FRIDAY - 11:30 AM TO 1:30 PM

W.B.C.S - YouTube schedule for 5-days

TIMING	DAYS				
	MONDAY	TUESDAY	WEDNESDAY	THURSDAY	FRIDAY
11:30	ECO	CA	ECO	POL	BEN
12:00	REAS	SCI	POL	SCI	REAS
12:30	ENG	MATHS	ENG	MATHS	ENG
13:00	GEO	HIS	GEO	HIS	HIS

UPCOMING BATCH

West Bengal Audit and Accounts Services

- SPECIAL EMPHASIS ON ACCOUNTANCY
- MATHS BASED ON STATICS
- MANY MORE.....



WBCS BATCH 2022



WBCS OFFLINE BATCH STARTS FORM

26TH FEBRUARY

TIMING - 1:30-5:30PM

BOOK YOUR SEAT NOW

9230141497/8017652045/6386903177/6291322109

