





WBBCS 2022



ECONOMICS

UNEMPLOYMENT



LIVE 11:30 AM

28 Feb 2022

Employment : It is a state in which a person participates in the economic activities to earn livelihood.

*Production of rice, wheat etc.
service*

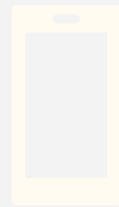
Unemployment: It is a state in which a person does not participate in the economic activities to earn livelihood; however the person is capable of and willing to work or participate.

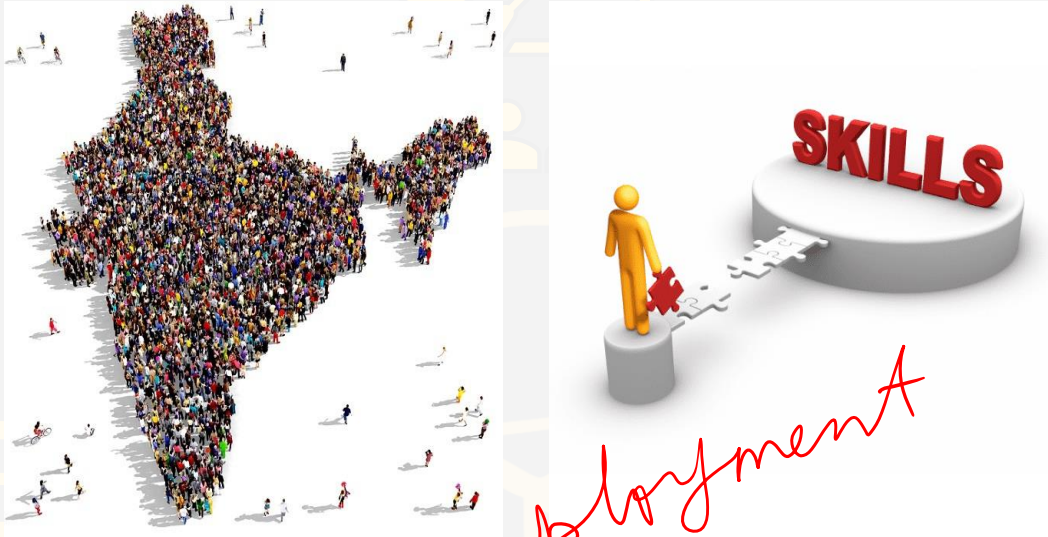




Labour force- 15-59 years age group
(capable of working)

✓ *15 onwards*
15 onwards
Unemployment rate- $\frac{20,000}{2,00,000} \times 100\%$
(Number of persons unemployed / Total number of persons in the labour force) * 1000 ✓





cause → unemployment
Effect → Poverty
poor → Unemployment

Causes of unemployment in India

1. Population

20 yrs
↓ ↑

2. Replacing labour with capital

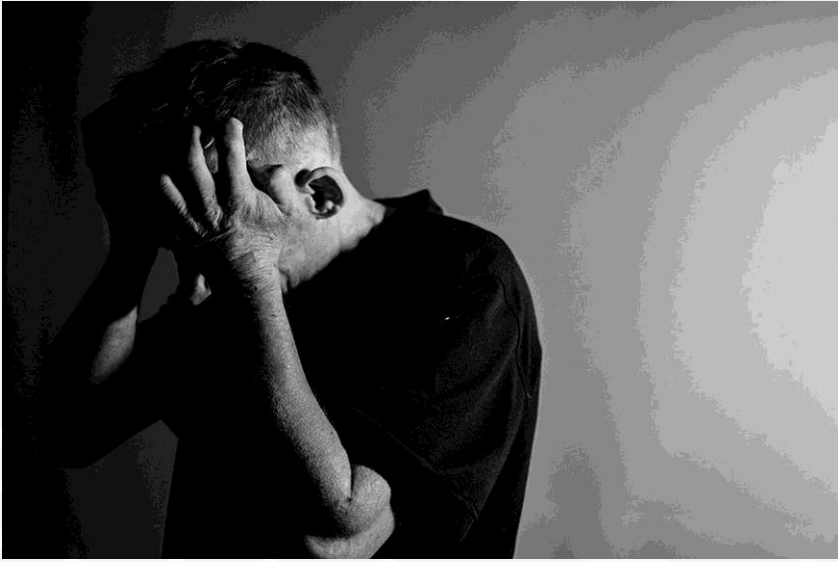
3. Seasonal agriculture

4. Lack of education and skill

5. Lack of proper infrastructure

Effects of unemployment

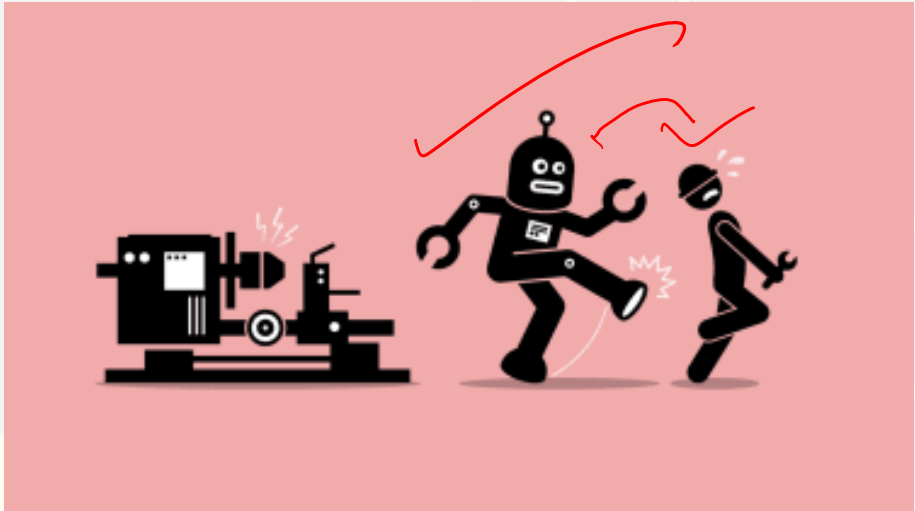
1. Rise of poverty
2. Fall in the national income
3. Rise in illegal activities
4. Mental health issues
5. Pressure on the government to boost the consumption and production





Types of unemployment

- **Voluntary unemployment-** When a person refuses to work or refuses to work at a given remuneration.
- **Involuntary unemployment-** When a person is able and willing to work but does not get any work.
- **Educated unemployment-** When a group of educated people do not get work.



- **Frictional unemployment-**

When a person becomes unemployed for a short period due to job change or any usual economic changes. This is nothing but the time gap between two jobs.

- **Structural unemployment-**

When unemployment takes place due change in the technology or methodology of production.

Disguised Unemployment



- **Seasonal unemployment:** Unemployment caused due to seasonal production. Eg. Agriculture, woolen goods etc.

- **Disguised unemployment:**

When more than the required number of people are employed in a given work, it is called disguised unemployment.

- ❑ The marginal productivity of disguised unemployed person is zero or nearly zero.

Handwritten notes in red ink: "10 people" with an arrow pointing to a checked box, and "20 people" circled with an arrow pointing to an unchecked box.

Five star



Quiz

1. What is the age group of the labour force?

a. ~~18-60~~

b. ~~14-60~~

c. 15-59

d. ~~21-59~~

Ans. (c) 15-59





2. *Marginal Productivity* is zero in case of-

a. Frictional unemployment

b. Disguised unemployment

c. Both (a) and (b)

d. None of the above

Ans. (b) Disguised unemployment



3. Which type of unemployment is common with respect to the Indian scenario?

a. Disguised unemployment

b. Frictional unemployment

c. Voluntary unemployment

d. None of the above

Ans. (a) Disguised unemployment



4. Unemployment rate-

- a. (Number of persons unemployed / Total population)* 100
- b. ~~(Number of persons unemployed / Total population)* 1000~~
- c. (Number of persons unemployed / Total number of persons in the labour force)* 100
- d. (Number of persons unemployed / Total number of persons in the labour force)* 1000

Ans. (d)



5. Mr. Das did not get through the final round of recruitment for having no knowledge of Google spreadsheet. This may be referred to-

- a. Educated unemployment
- b. Structured unemployment
- c. Frictional unemployment
- d. Disguised unemployment

Ans. (b) Structured unemployment

WBCS BATCH 2022



WBCS OFFLINE BATCH STARTS FORM

26TH FEBRUARY

TIMING - 1:30-5:30PM

BOOK YOUR SEAT NOW

9230141497/8017652045/6386903177/6291322109

