



IBPS/ BANK/ LIC AAO 2023



ENGLISH

READING COMPREHENSION

INFORMATIVE OR NON-FICTION

जानिए एक क्लास में

(((•))) LIVE | 10:30 AM

BY SHALINI MAHENDRAS





UPCOMING ONLINE BATCHES

February 2023

08 FEB 2023

03:00 PM to 05:00 PM

SSC ONLINE LIVE CLASS

BILINGUAL

15 FEB 2023

10:30 AM to 12:30 PM

BANK ONLINE LIVE CLASS

BILINGUAL

15 FEB 2023

06:30 PM to 08:30 PM

BANK ONLINE LIVE CLASS

English & Bengali



www.mahendras.org



7052477777/7052577777



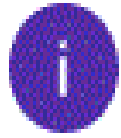
SUMMARY

1. Thought of the day
2. Today's word
3. Types of tones
4. Questions with passage
5. Practice
6. Homework



Good Morning

A new day has come with so many new opportunities for you. Grab them all and make the best out of your day. Here's me wishing you a good morning!

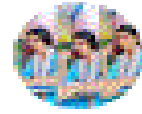


ishani pramanik 7 hours ago

Option b



Reply



Zikra Yasmeen 10 hours ago

Option B



Reply

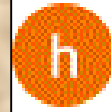


Surbhi Sinha 11 hours ago

Homework question answer 🙌 option bbbbbbbbbb



Reply



harsh sharma 21 hours ago

Today's homework answer is option b

Thank you mam amazing sessions 🙌🙌



1

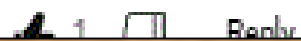
Reply



Kajal Singhal 14 hours ago

Home work ans option b

Aapka session bhut bhut achha tha mam aaj bhi bhut kuch achha or new sikhne ko mila hme thank you so much mam 🙌🙌🙌



1

Reply



TODAY'S WORD



ravenous

**Very eager for
satisfaction, gratification
or food**



Find the error

HOMEWORK

(a) It is very cold here/ (b) I
should bring/ (c) my woolen
clothes but I didn't./ (d) No error.

Should have brought

modal
have + V3

DID YOU
KNOW?





READING

COMPREHENSION

NON FICTION AND

INFORMATIVE

*real facts,
events*





Non-Fiction?

Informative?

*Characterized
by facts
of something*

*Real events
or facts*

rather than

Stories

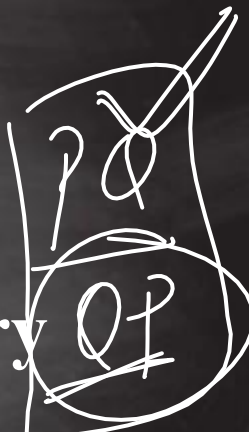




ARE YOU
READY?



1. Size-up the task
2. Ask Questions
3. Avoid Sub vocalization
4. Read Group of Words
5. Expand your Vocabulary
6. Set Goals and Track your Progress

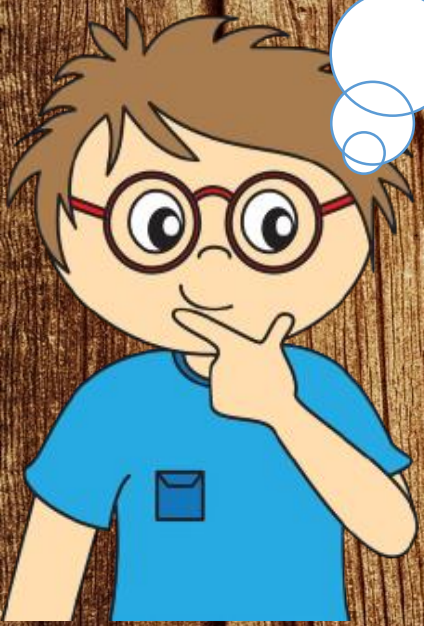


TIPS & TRICKS





TYPES OF QUESTIONS



- 1. Among the given statements, which statement is true as per the passage?**
- 2. Among the given statements, which statement is false as per the passage?**
- 3. Choose the correct antonym.**
- 4. Select the correct synonym.**
- 5. What should be the appropriate tone of the passage?**
- 6. Among the given statements, which statement can be inferred?**
- 7. Select an appropriate title for the passage.**
- 8. Direct /Indirect questions from the passage**



The collapse of a great wall of garbage in east Delhi's Ghazipur area, sweeping people and vehicles into a nearby canal, is a stark reminder that India's neglected waste management crisis can have deadly consequences. More than a year after the notification of the much-delayed Solid Waste Management Rules, cities and towns are in no position to comply with its stipulations, beginning with the segregation of different kinds of waste at source and their scientific processing. Neither are urban local governments treating the 62 million tonnes of waste generated annually in the country as a potential resource. They have left the task of value extraction mostly to the informal system of garbage collectors and recyclers. Improving on the national record of collecting only 80% of waste generated and being able to process just 28% of that quantum, requires behaviour modification among citizens and institutions.



But what is more important is that the municipal bodies put in place an integrated system to transport and process what has been segregated at source. The Swachh Bharat programme of the Centre has focused too narrowly on individual action to keep streets clean, without concurrent pressure on State and municipal authorities to move closer to scientific management by the deadline of April 2018 set for most places, and arrest the spread of pollution from trash.

to find something
In the absence of stakeholders at the local body level, recoverable resources embedded in discarded materials are lost due to dumping. Organic refuse, which forms about 50% of all garbage, readily lends itself to the generation of compost or production of methane for household use or power generation. But it is a major opportunity lost.



Organic waste that could help green cities and feed small and affordable household biogas plants is simply being thrown away. It is also ironic that while some countries such as Rwanda and Kenya have introduced stiff penalties for the use of flimsy plastic bags, India is doing little to prevent them from drifting into suburban garbage mountains, rivers, lakes and the sea, and being ingested by cattle feeding on dumped refuse. A new paradigm is needed, in which bulk waste generators take the lead and city managers show demonstrable change in the way it is processed. There has to be a shift away from large budgets for collection and transport by private contractors, to the processing of segregated garbage. As the nodal body for the implementation of the new rules, the Central Pollution Control Board should put out periodic assessments of the preparedness of urban local bodies in the run-up to the deadline.

difficult to bend



Without a rigorous approach, the national problem of merely shifting city trash to the suburbs, out of sight of those who generate it, will fester and choke the landscape. Considering that waste volumes are officially estimated to grow to 165 million tonnes a year by 2030, many more suburbs are bound to be threatened by collapsing or burning trash mountains.

Which of the following can be the suitable title for the passage?

- A. Mountains of garbage
- B. Negligence of waste management
- C. Waste management and clean India.
- D. Clean India campaign
- E. None of These



Answer: A



Which of the following statement is/are wrong according to the passage.

I. The Swachh Bharat programme of the Centre has focused too much on individual action to keep streets clean.

II. Organic waste that could help green cities and feed small and affordable household biogas plants is simply being thrown away.

III. Organic refuse, which forms more than 50% of all garbage, readily lends itself to the generation of compost or production of methane for household use or power generation

A. Only I

B. (I) and (III)

C. Only B

D. Only C

E. (I) and(II)



Answer: option B





Which of the following country/countries introduced stiff penalties for the use of flimsy plastic bags?

A. Rwanda and Kenya

B. Kenya and India

C. India

D. Rwanda

E. Kenya

not strong



Answer: A

Explanation: It is also ironic that while some countries such as Rwanda and Kenya have introduced stiff penalties for the use of flimsy plastic bags.





Choose the word, which is **MOST SIMILAR** in meaning of the word printed in bold as used in the passage.

Flimsy

A. **Tough**

B. **Coarse** → not smooth

C. **Thin**

D. **Lasting**

E. **Durable**

Answer: C

Explanation: **Flimsy** means without material strength or solidity.





Choose the word, which is **MOST SIMILAR** in meaning of the word printed in bold as used in the passage.

Sweeping

A. far-reaching

B. Narrow

C. Restricted

D. Limited

E. Specific

Answer: A

Explanation: Sweeping means having considerable extent.





Choose the word, which is **MOST OPPOSITE** in meaning of the word printed in bold as used in the passage.

Segregation

A. Isolation

B. Solitude

C. Seclusion

D. Camaraderie

E. Separateness

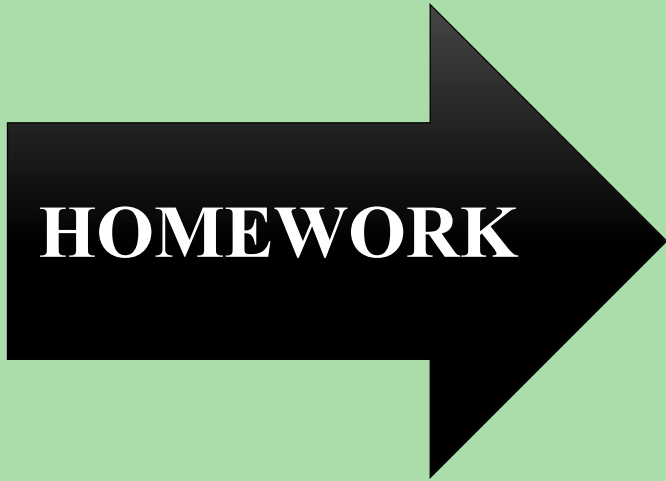
Answer: D

Explanation: Segregation means the state of being alone or kept apart from others.



a feeling of friendship/trust





Choose the word, which is **MOST OPPOSITE** in meaning of the word printed in **bold** as used in the passage.

Embedded

A. Fixed

B. Encapsulate

C. Uproot

D. Ingrain

E. Entrench

10:30



