



WBCS 2022



SCIENCE

DIGESTIVE SYSTEM PART-2



 LIVE 12:00 PM

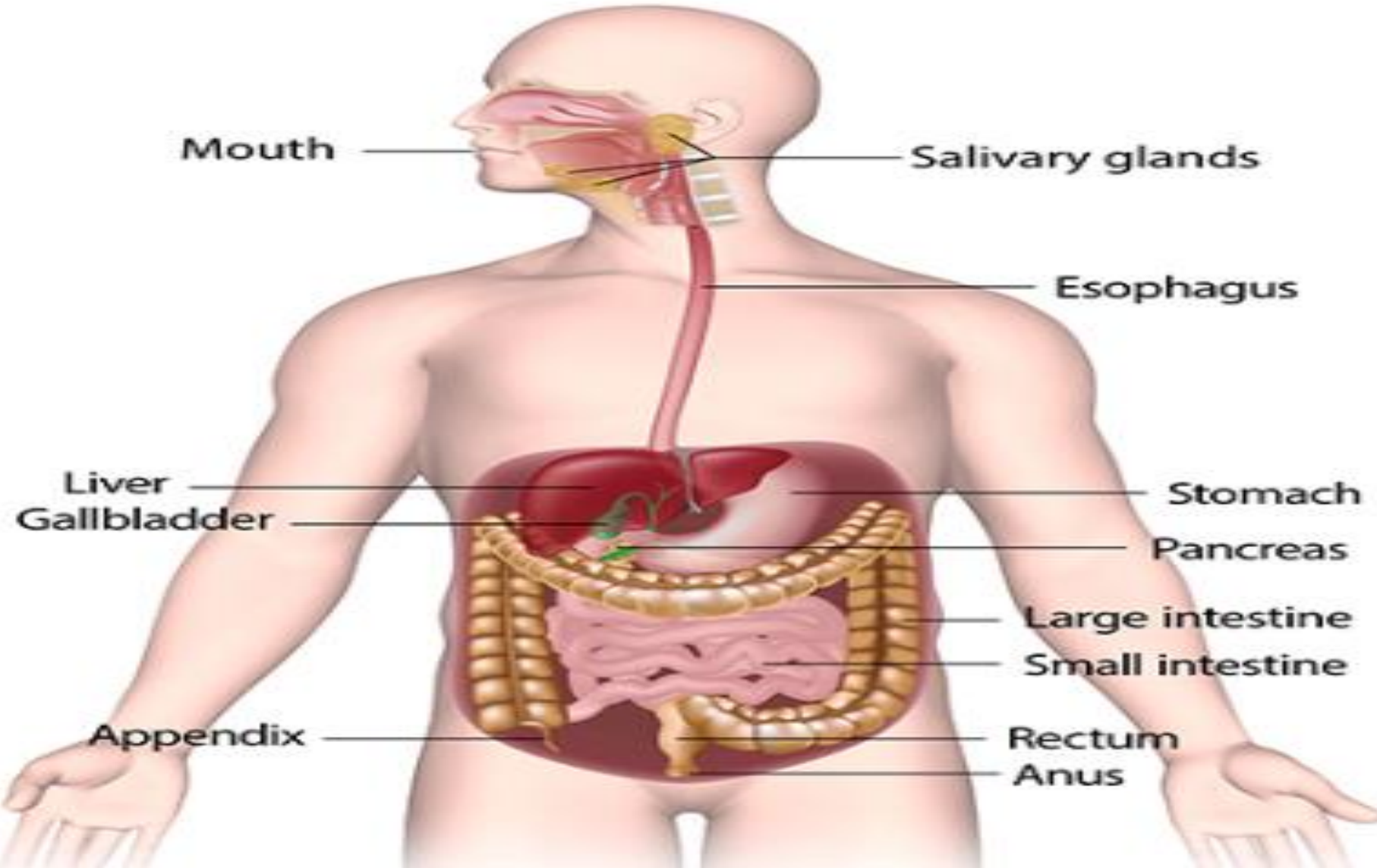
 24 MARCH 2022



DIGESTIVE SYSTEM



The Digestive System



Types

Mechanical (physical) - Chew , Tear , Grind , Mash , Mix

Chemical - Enzymatic reactions to improve
digestion of Carbohydrates ,

Proteins

Mouth

Pharynx

Esophagus

Stomach

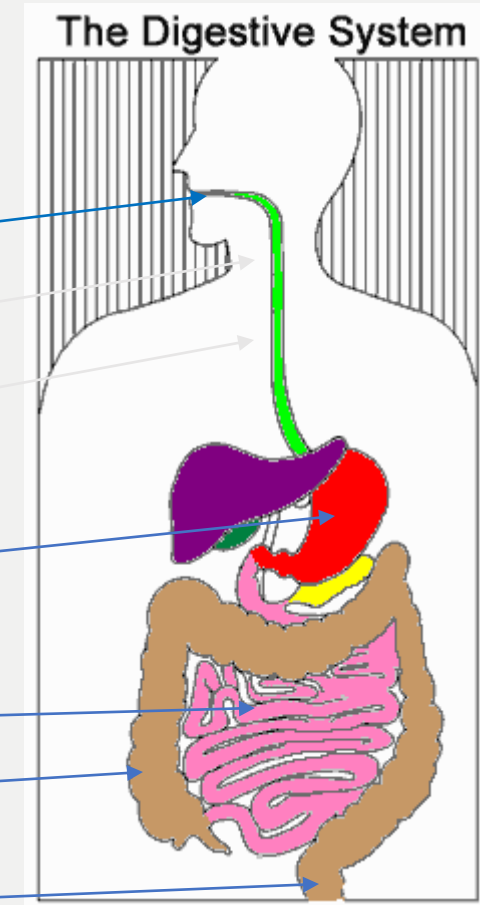
Small intestine

Large Intestine

Rectum

Digestive System

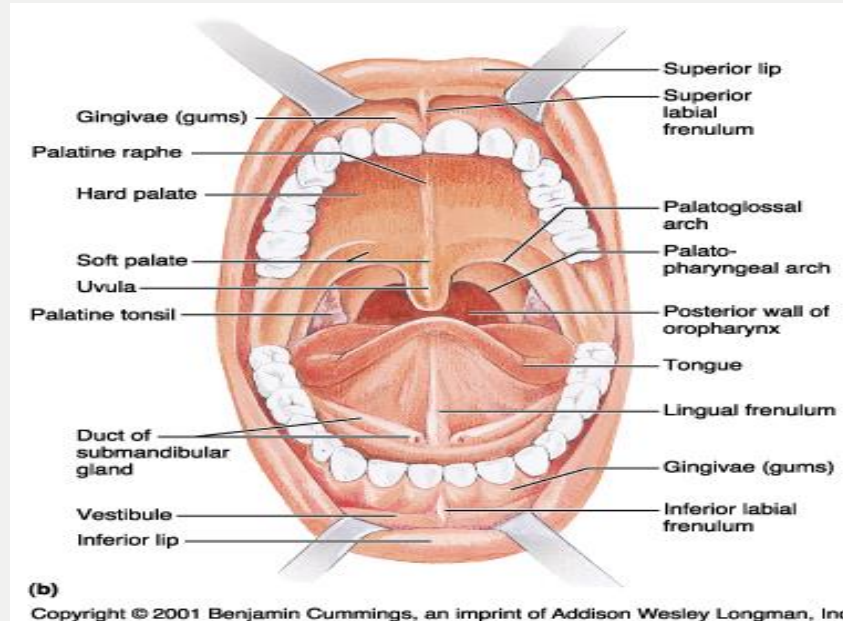
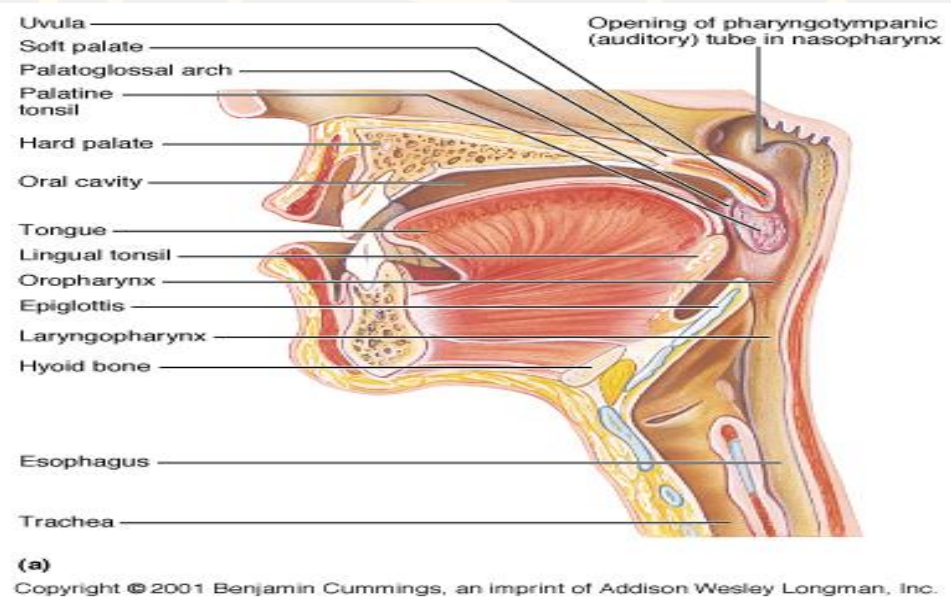
- Gastrointestinal (GI) tract
 - Tube within a tube
 - Direct **link/path** between organs
 - Structures
 - Mouth
 - Pharynx
 - Esophagus
 - Stomach
 - Small intestine
 - Large Intestine
 - Rectum



Mouth

- Teeth mechanically break down food into small pieces. Tongue mixes food with saliva (contains amylase, which helps break down starch).

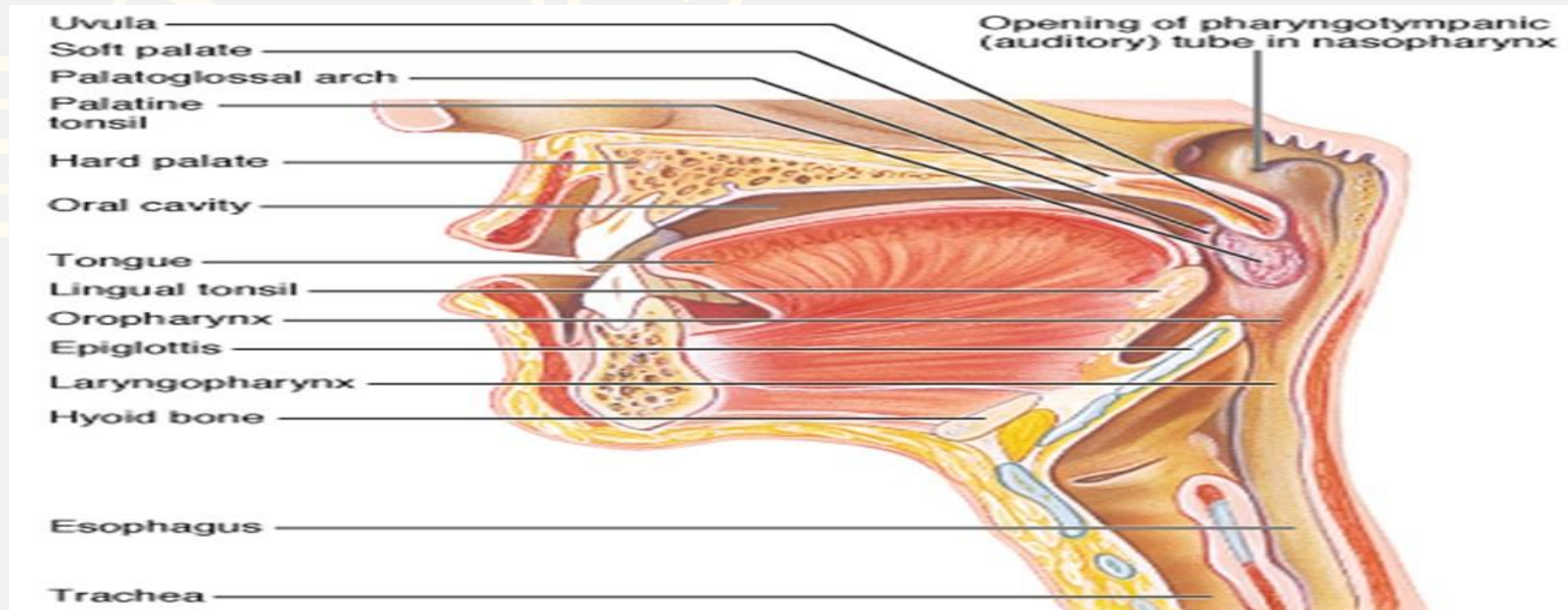
- Epiglottis is a flap-like structure at the back of the throat that closes over the trachea preventing food from entering it. It is located in the Pharynx.



Tongue mixes food with saliva :-

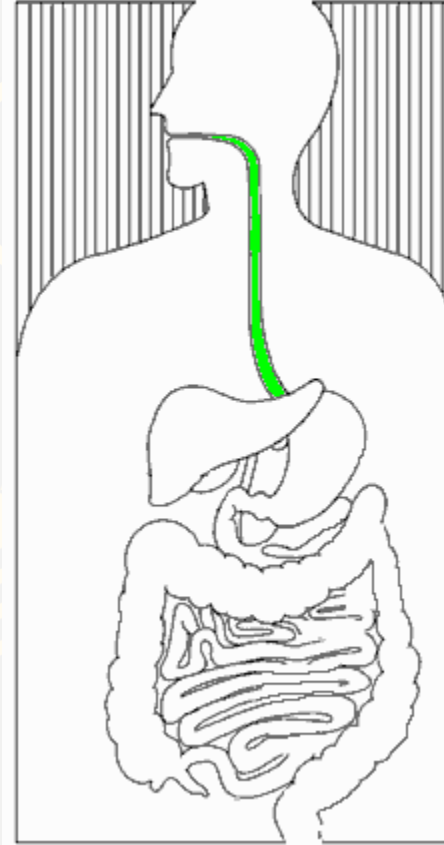
(contains amylase, which helps break down starch).

Epiglottis is a flap-like structure at the back of the throat that closes over the trachea preventing food from entering it.



SECRETE MUCUS, Moves food from the throat to the stomach using muscle movement called peristalsis . If acid from the stomach gets in

The Digestive System



- J-shaped muscular bag that store the food you eat, breaks it down into tiny pieces.

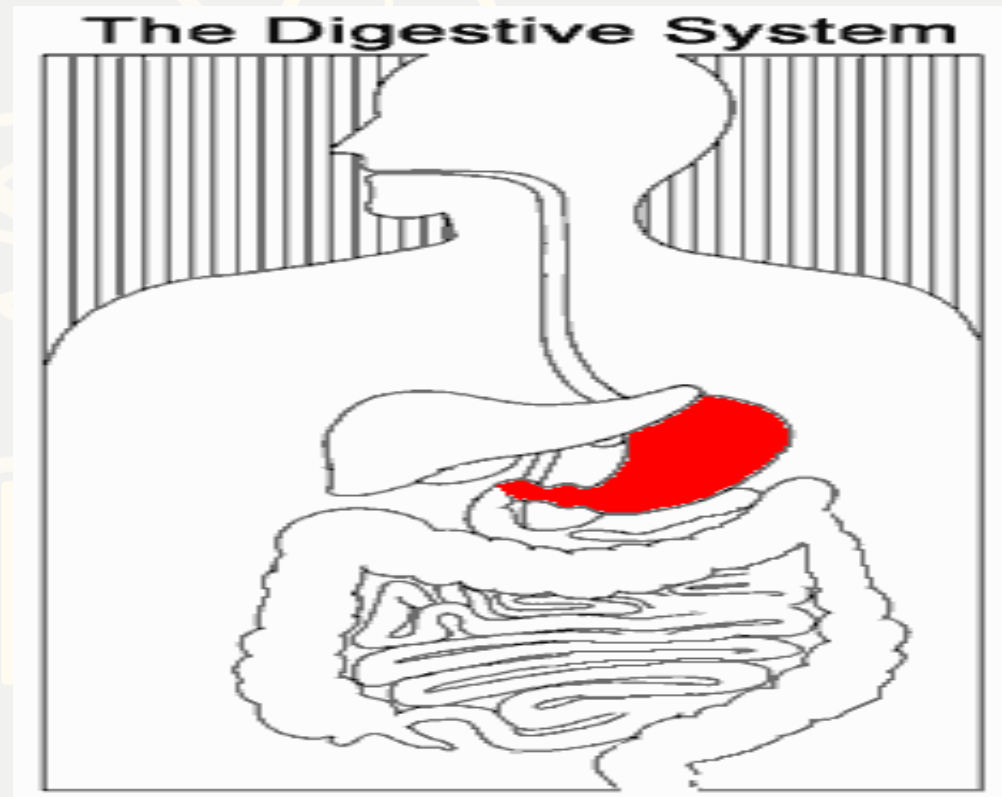
Mixes food with digestive juices that contain enzymes to break down proteins and lipids.

Acid in the stomach kills bacteria.

Food found in the stomach is called BOLUS.

Food found in the Small Intestine CHIME.

Food found in the Large Intestine CHYLE.



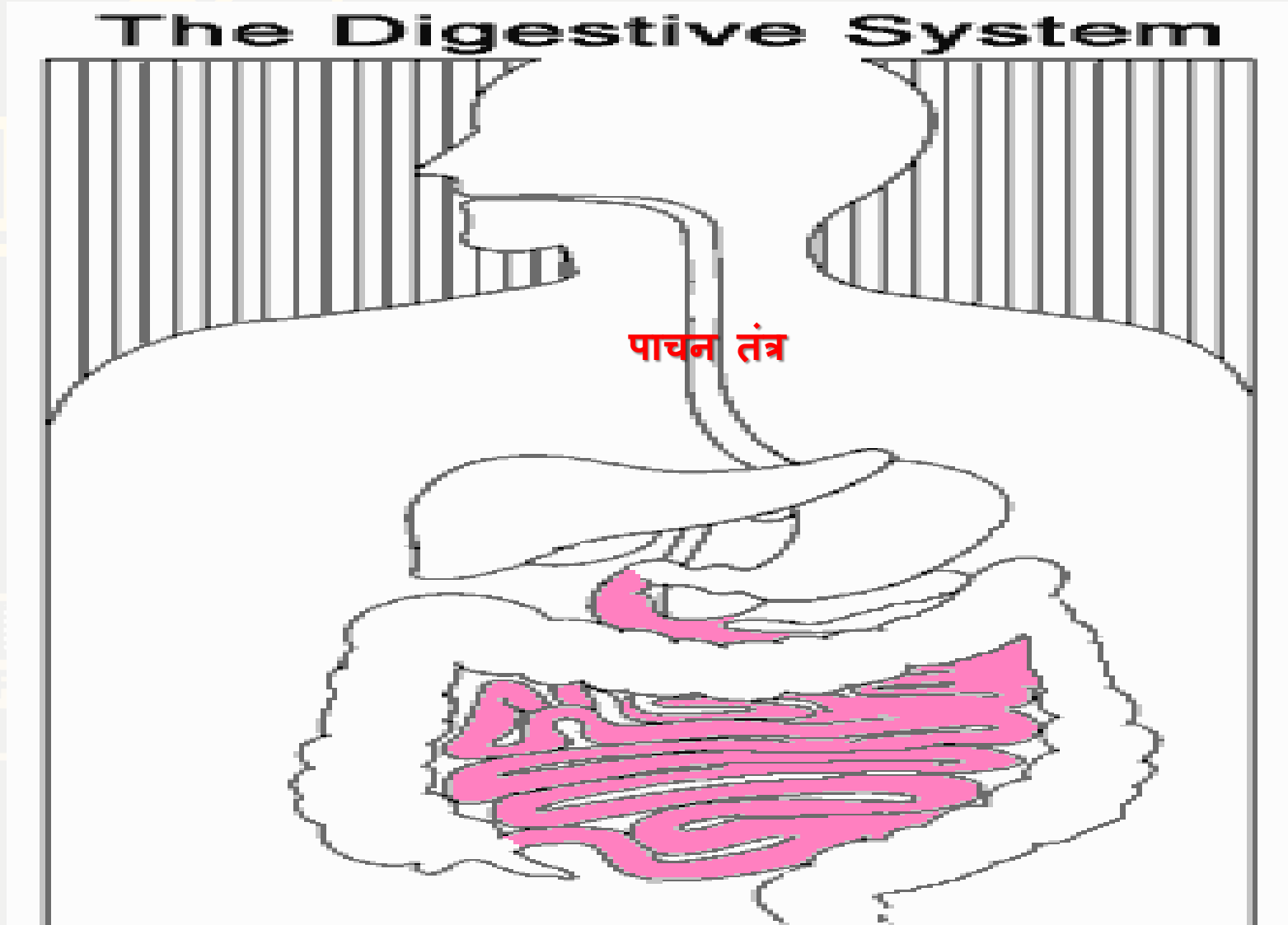
➤ **Small intestines:**

1- Small intestines are roughly 7 meters long

2- Lining of intestine walls has finger-like projections called villi, to increase surface area.

3- The villi are covered in microvilli which further increases surface area for absorption.

Small intestine :





WBCS BATCH 2022



WBCS OFFLINE BATCH STARTS FORM

26TH FEBRUARY

TIMING - 1:30-5:30PM

BOOK YOUR SEAT NOW

9230141497/8017652045/6386903177/6291322109

Thank
you

