



SSC CGL/CPO/CHSL/STENO



ENGLISH

NEW PATTERN पर आधारित

SOME VERY IMPORTANT
**CONFUSING
WORDS**



LIVE | 07:30 PM

BY NAMITA MAHENDRAS



Word
of the
Day

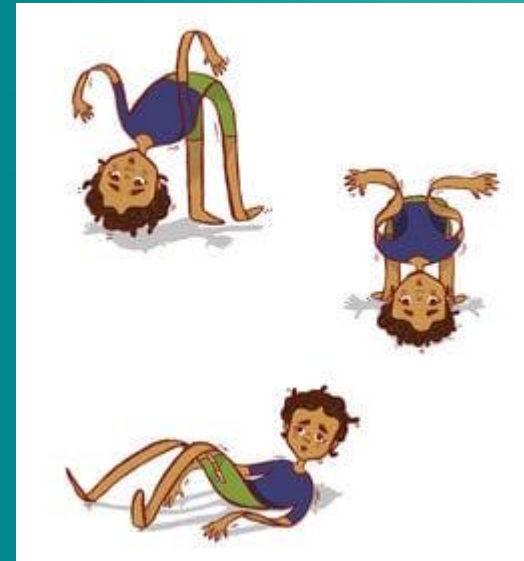
SCOUR



1. ANTICS

funny, strange or silly ways of behaving OR tricks .

अजीब और बेतुकी हरकतें; मसखरापन



2. ANTIQUES

पुरानी या प्राचीन काल की कोई वस्तु

Ancient pieces of art



3. Casual

रुचि से वंचित , अनौपचारिक

Not taking much interest , relating to cause

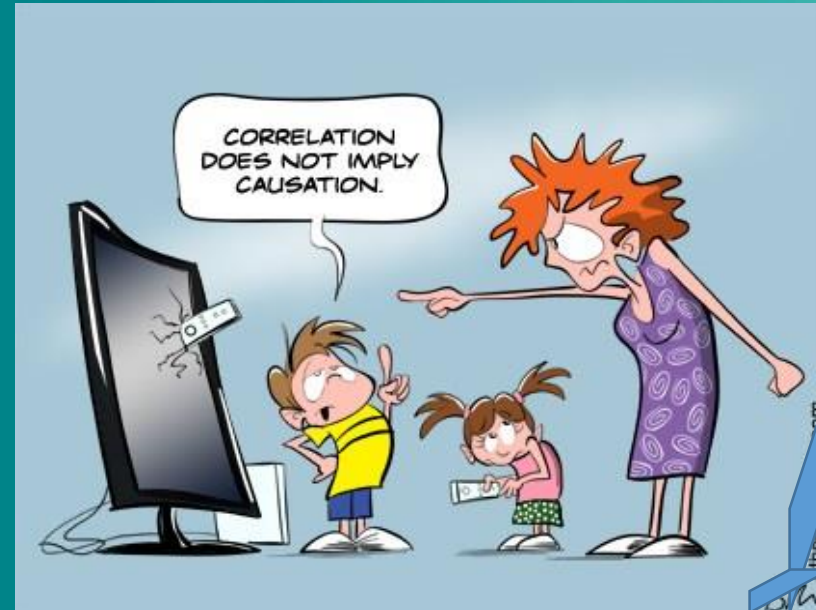


4. Causal

relating to or acting as a cause.

करणीय

"the causal factors associated with illness"



5. Childish

like a child , foolish

बचकाना ; नासमझी का
childish handwriting



6. Childlike

like a child , innocent

बालक के समान



7. Affect असर करना

make somebody/something change in a particular way; to influence somebody/something

Her personal problems seem to be affecting her work.



किसी को गहरा दुख, क्रोध आदि अनुभव कराना

to make somebody feel very sad, angry, etc.

The whole community was affected by the terrible tragedy.



8. Effect

परिणाम

a change that is caused by something; a result

the effects of acid rain on the lakes and forests



9 . allusion vs. illusion

Allusion (noun) that means "a statement that refers to something without mentioning it directly"

संकेत, इशारा

He likes to make allusions to the size of his salary.



10 . Illusion (noun) निराधार विचार, धारणा

that refers to something that looks or seems different from what it is, as in "paint that creates the illusion of metal"

It also refers to an idea that is based on something that is not true, as in "they were under the illusion that the car was brand new."



I went to the ___ store to buy a birthday card

.

Stationery

stationary

Ans :- A



I gained ___ to the room using a key.

Excess

Access

ANS :- B



The company rejected their competitor's ___ for a buyout.

Preposition

Proposition

ANS :- B

Proposition means "something offered for consideration."

A preposition is a part of speech, such as *against* in "leaned against the wall."



The ___ called a faculty meeting

.

Principle

Principal

ANS :- B



The criminal managed to __ capture.

1. Both elude and allude are correct

2. Allude

3. Elude

Allude means to refer to something indirectly. *Elude* means to evade or escape something. Keep in mind that elude starts with E, just like *escape* and *evade*



Those clouds seem to suggest that a storm is ____

Both imminent and eminent are correct

Imminent

Eminent

Immanent

Imminent is used to describe something that is about to happen.

Eminent is used to describe someone or something that stands out above others in a noticeable way.

Immanent is defined as "being within the limits of a possible experience or knowledge."



She was confident that he would _____
to her request.

- A. exceed
- B. accede

Ans :- B



