



WBCS 2022



SCIENCE

ACCESSORY ORGANS



LIVE 12:00 PM



31 MARCH 2022



ACCESSORY ORGANS DIGESTIVE SYSTEM

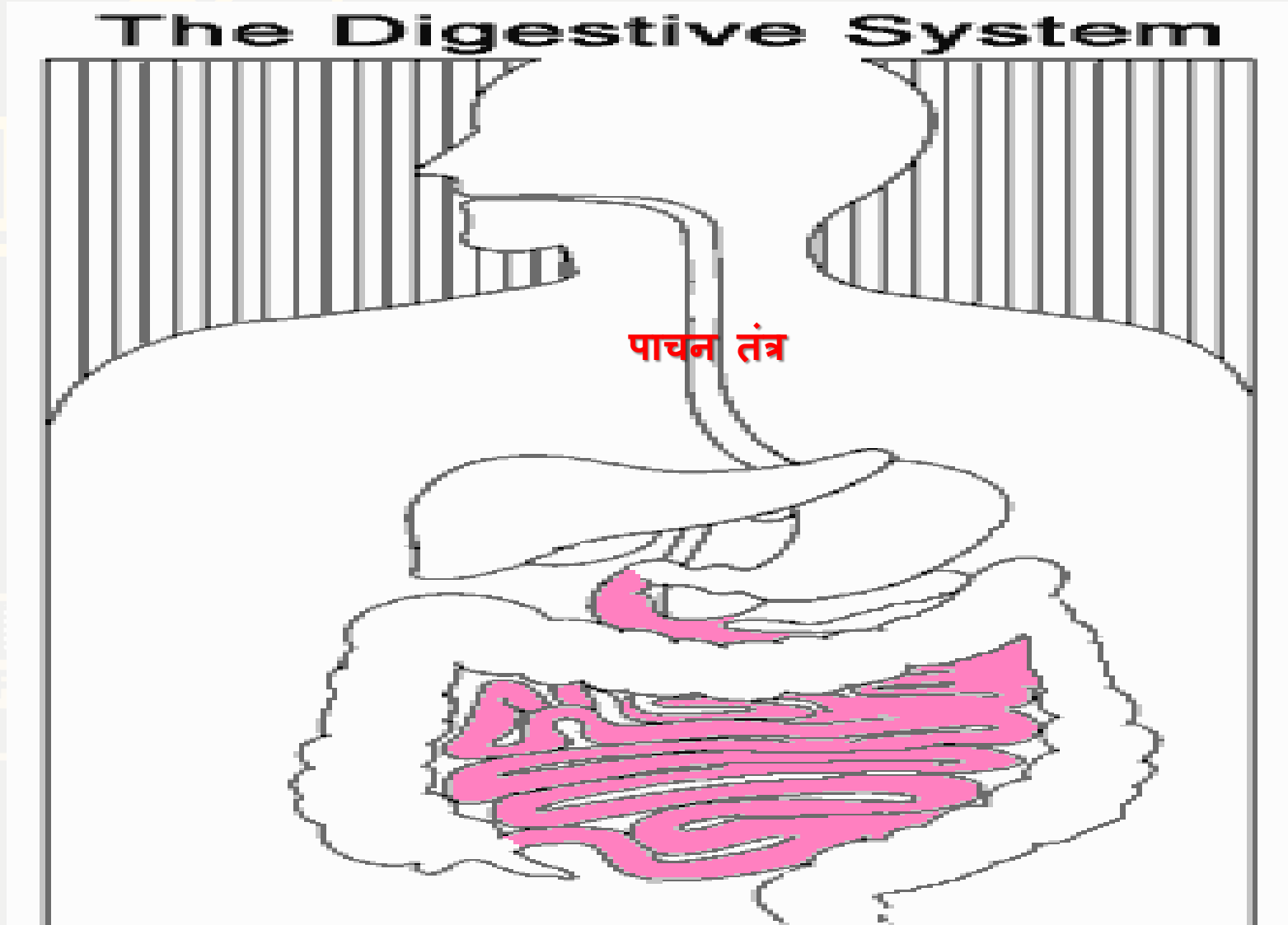
➤ **Small intestines:**

1- Small intestines are roughly 7 meters long

2- Lining of intestine walls has finger-like projections called villi, to increase surface area.

3- The villi are covered in microvilli which further increases surface area for absorption.

Small intestine :



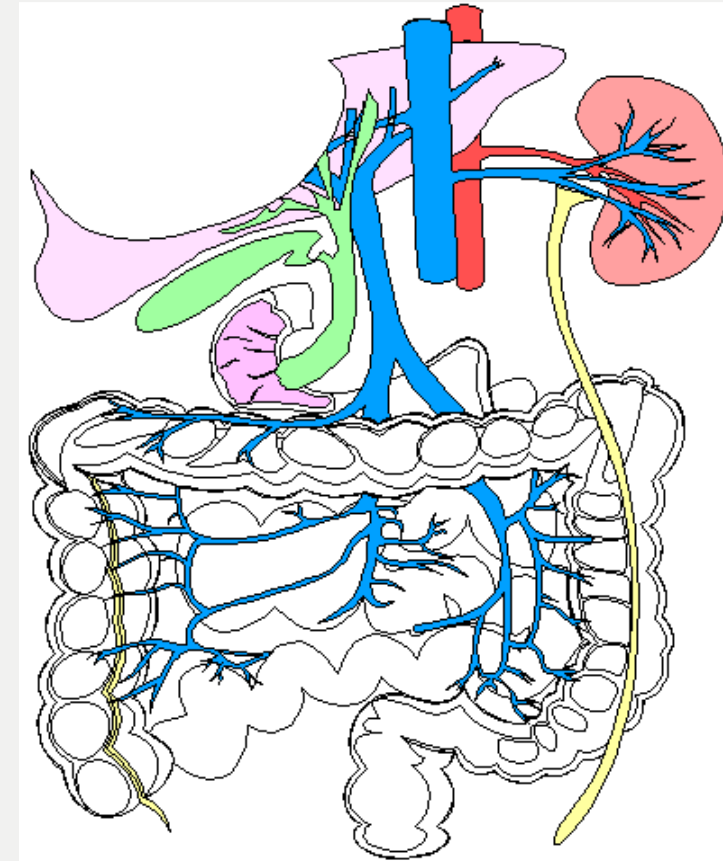


Small intestine:

Nutrients from the food pass into the bloodstream through the small intestine walls.

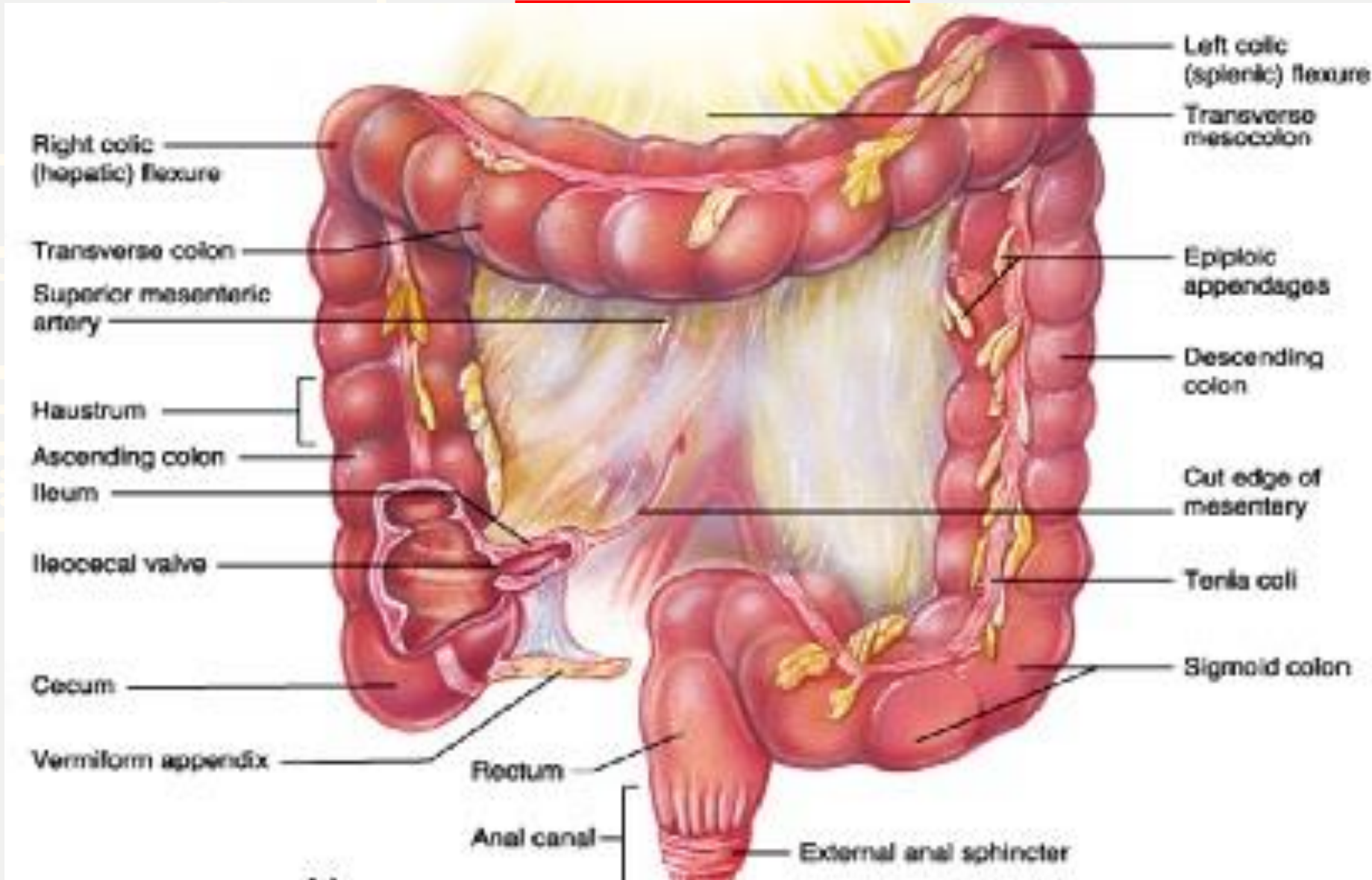
➤ Absorbs:-

- 80% ingested water
- Vitamins
- Minerals
- Carbohydrates
- Proteins
- Lipids
- Secretes digestive enzymes





Large intestine



About 5 feet long

Accepts what small intestines don't absorb

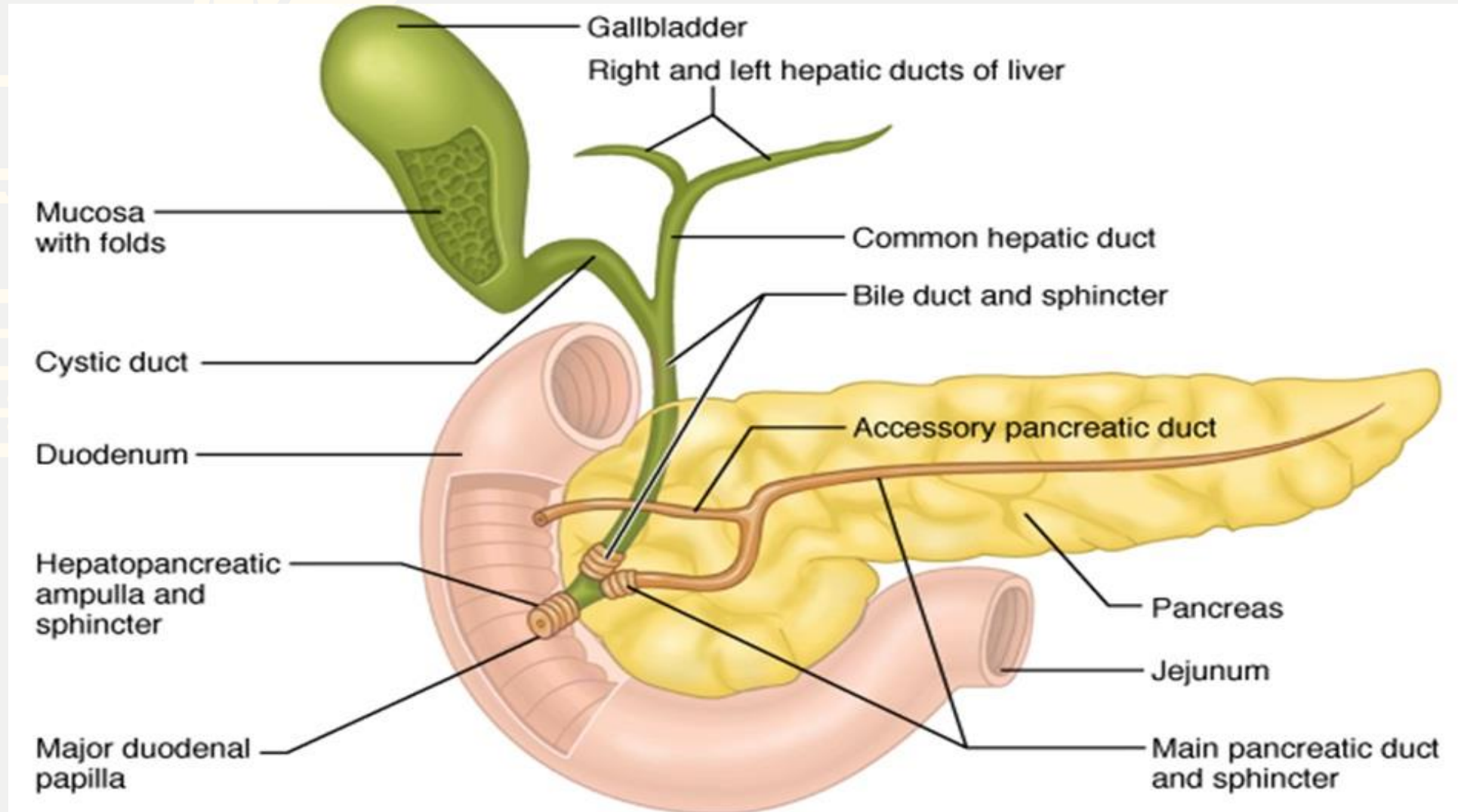
Rectum (short term storage which holds feces before it is expelled).

Functions :-

- **Bacterial digestion**
- **Ferment carbohydrates**
- **Protein breakdown**
- **Absorbs more water**
- **Concentrate wastes**

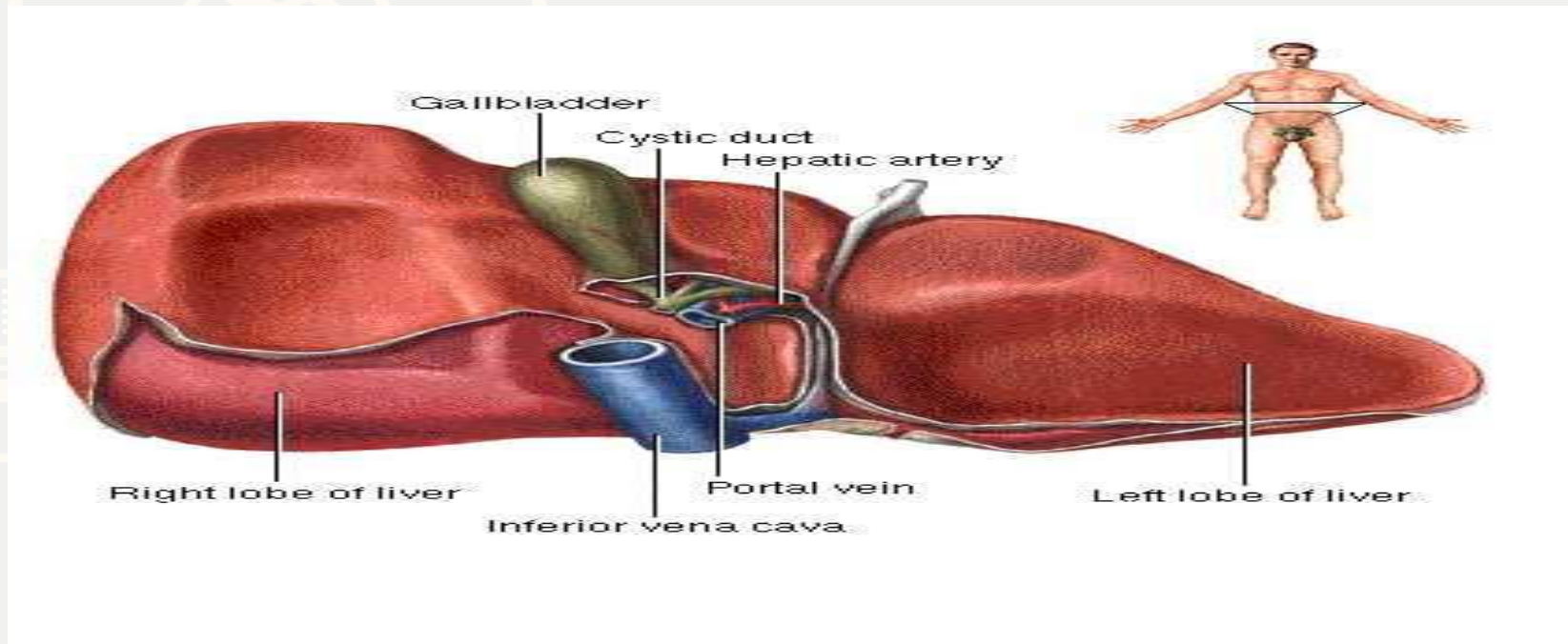
ACCESSORY ORGANS

Include: Liver, gall bladder, and pancreas



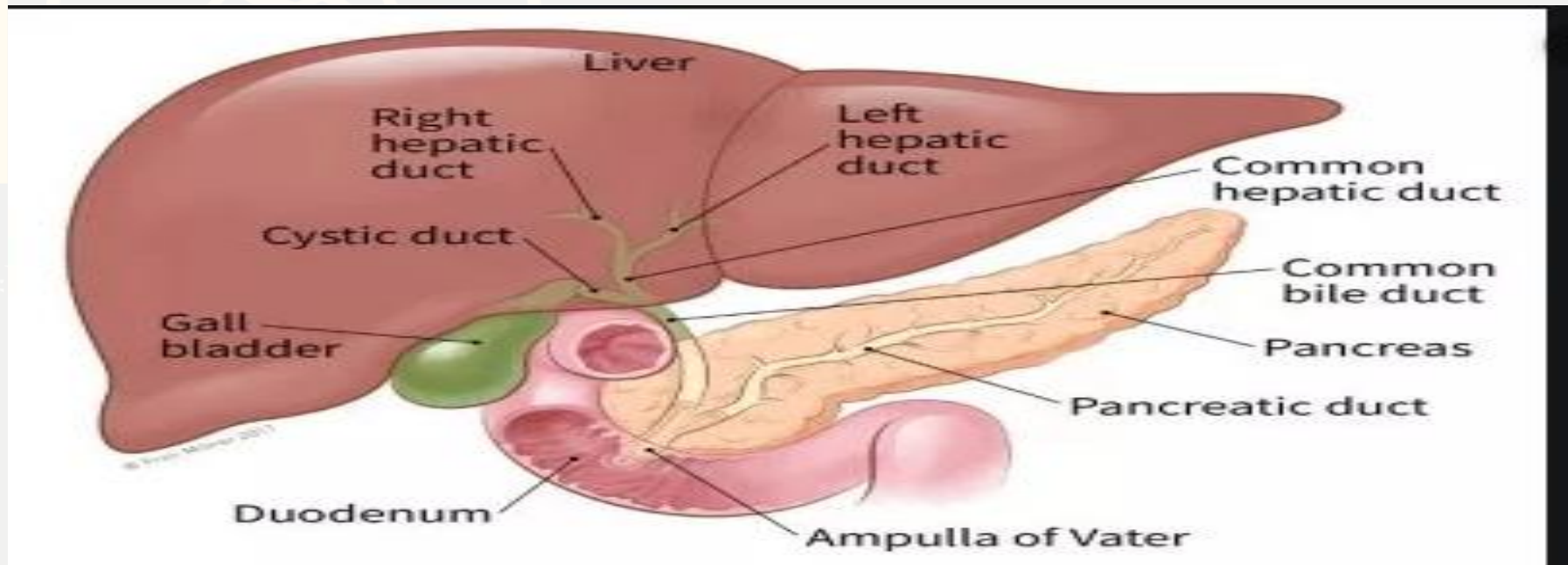
Liver

- Directly affects digestion by producing bile
 - Bile helps digest fat
 - filters out toxins and waste including drugs and alcohol and poisons.



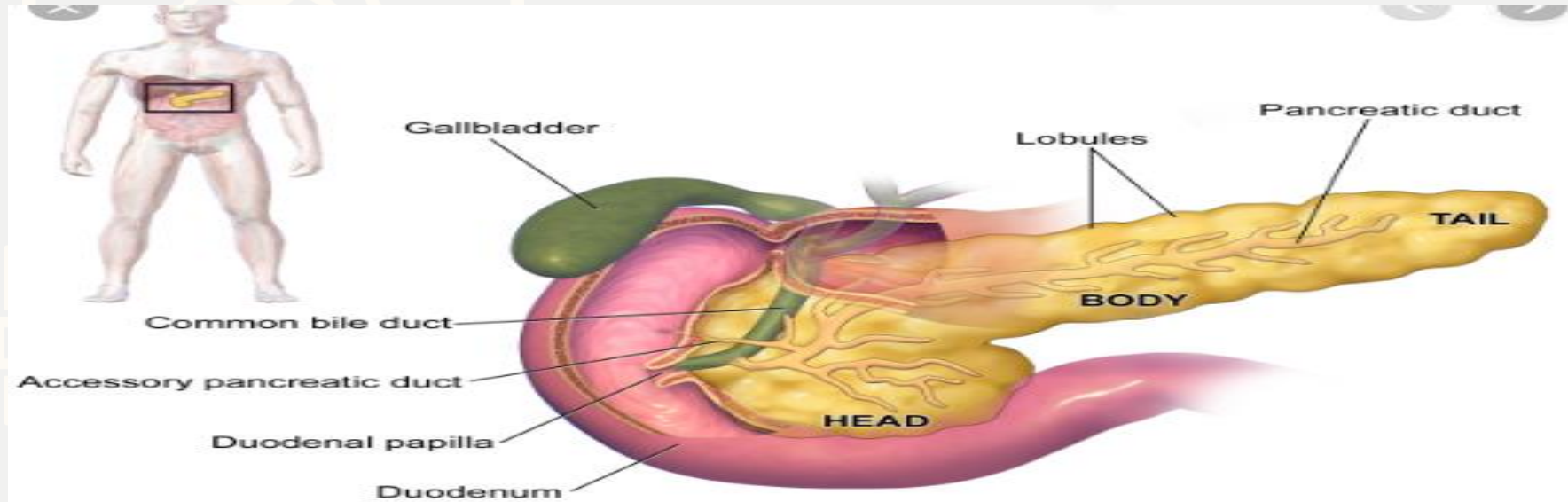
Gall Bladder

- Stores bile from the liver, releases it into the small intestine.
- Fatty diets can cause gallstones



Pancreas

- Produces digestive enzymes to digest fats, carbohydrates and proteins
- Regulates blood sugar by producing **insulin**.





WBCS BATCH 2022



WBCS OFFLINE BATCH STARTS FORM

26TH FEBRUARY

TIMING - 1:30-5:30PM

BOOK YOUR SEAT NOW

9230141497/8017652045/6386903177/6291322109

Thank
you

