



WBBCS 2022



SCIENCE

DIGESTIVE SYSTEM

PART-1



LIVE 12:00 PM

22 MARCH 2022



1. Carbohydrate ✓
 2. Protein ✓
 3. Fat ✓
- Vit
Min
Water
Fibre

ଅମ୍ଳଜନ ପ୍ରଣାଳୀ

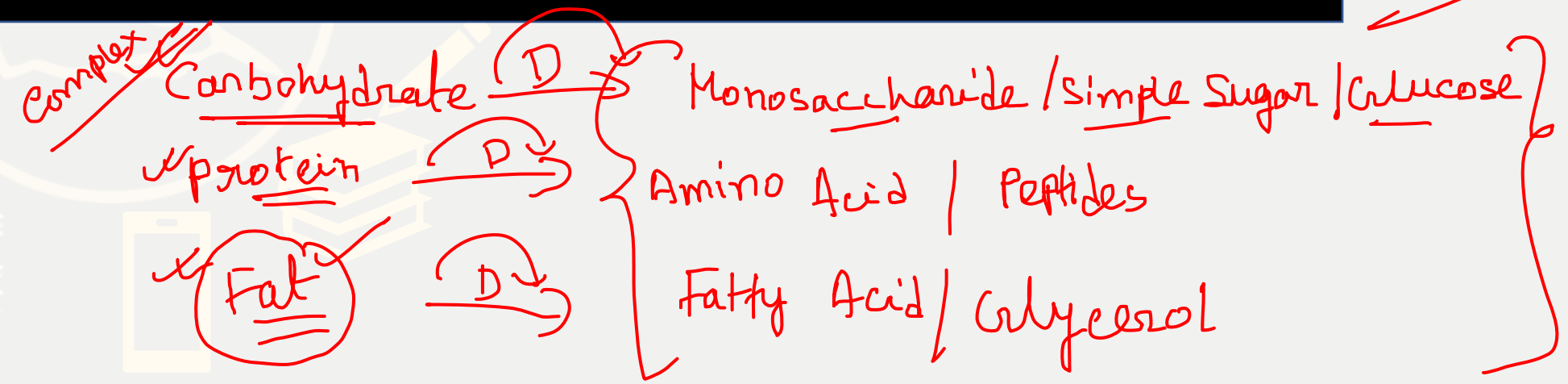
✓ System

① ✓
Digestion → ② ✓
Absorption

ENZYME (କିରୀଣ୍ଡା)

DIGESTIVE SYSTEM

Simple



➤ Digestion system

Phases Include

1- Ingestion

2- Movement

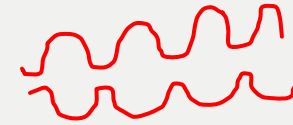
3- Mechanical and Chemical (Enzyme)

4- Digestion

5- Absorption

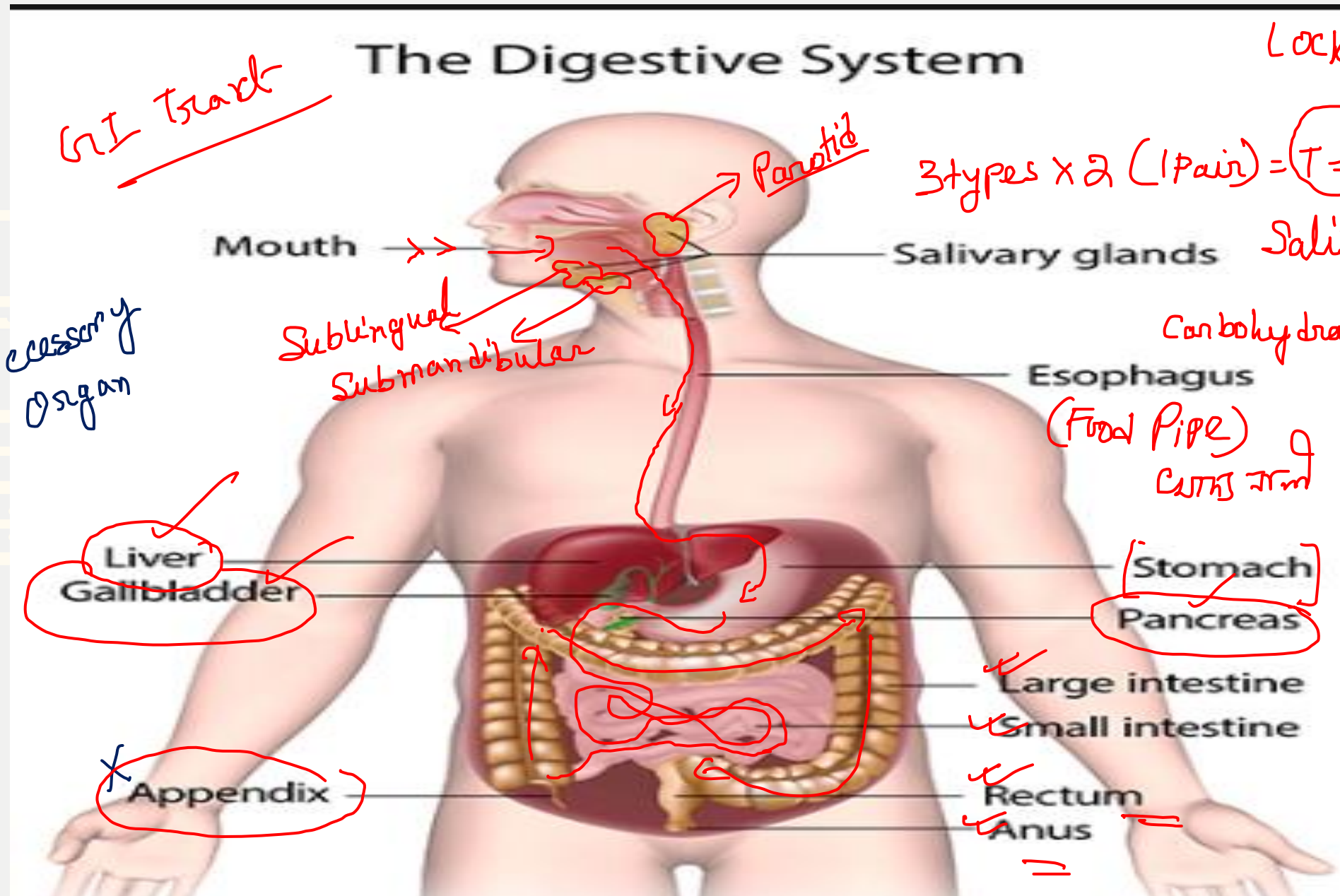
6- Elimination

Peristalsis Movement





The Digestive System



G.I. Tract

Lock and key

3 types x 2 (1 pair) = T=6

Accessory organ

Sublingual
Submandibular

Saliva / Mucus

Carbohydrate }
Amylase }
Enzyme

Esophagus
(Food Pipe)
Cuts 2nd

Liver
Gallbladder

Stomach
Pancreas

420-2-1
✓ HCl }
✓ Pepsin }
Renin *
3-4 yrs

Appendix

Rectum
Anus

Types

Mechanical (physical) - Chew , Tear , Grind , Mash , Mix

Chemical - Enzymatic reactions to improve
digestion of Carbohydrates ,

Proteins

Mouth

Pharynx

Esophagus

Stomach

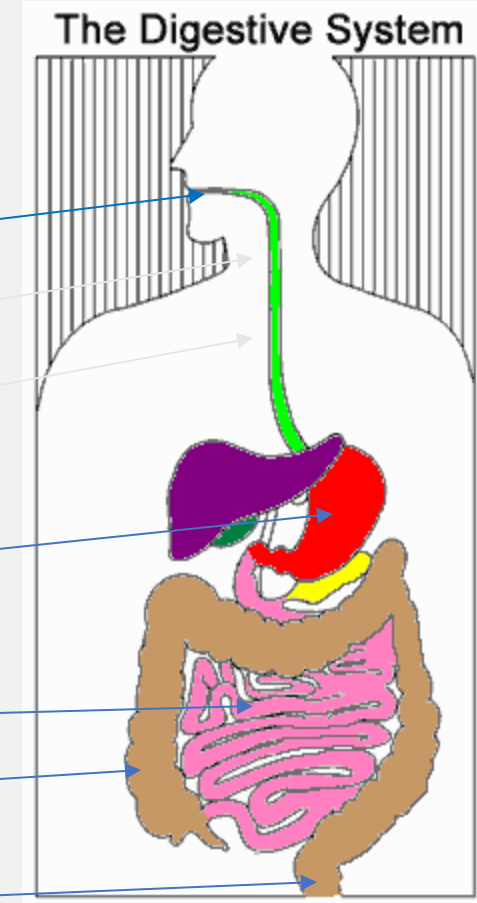
Small intestine

Large Intestine

Rectum

Digestive System

- Gastrointestinal (GI) tract
 - Tube within a tube
 - Direct **link/path** between organs
 - Structures
 - Mouth
 - Pharynx
 - Esophagus
 - Stomach
 - Small intestine
 - Large Intestine
 - Rectum





WBCS BATCH 2022



WBCS OFFLINE BATCH STARTS FORM

26TH FEBRUARY

TIMING - 1:30-5:30PM

BOOK YOUR SEAT NOW

9230141497/8017652045/6386903177/6291322109

Thank
you

