

# SSC MTS/HAWALDAR/CHSL



**GK/GS**

## MAJOR STRAITS OF THE WORLD

तैयारी जीत की...



**LIVE**

**05:30 PM**



**Strait:** A strait is a **thin channel of waterways** i.e. **narrow passage of water** that connects two seas or two other large areas of water.

The following are the main characteristics of a strait:

- Formed by **natural processes**
- **Narrower than the seas** it connects
- **Navigable**

<b>Strait</b>	<b>Contiguous Landmass</b>	<b>Joining Seas/Water Bodies</b>
Formosa Strait	China and Taiwan	The South China Sea and the East China Sea
Strait of Tartary	Russia (East Russia-Sakhalin Islands)	Sea of Okhotsk and the Sea of Japan
Yucatan Strait	Mexico and Cuba	The Gulf of Mexico and the Caribbean Sea
Mesina Strait	Italy and Sicily	The Tyrrhenian Sea and the Ionian Sea, within the central Mediterranean
Otranto Strait	Italy and Albania	Adriatic Sea & Ionian Sea
Cook Strait	New Zealand	The Tasman Sea and South Pacific Ocean
Mozambique Channel	Mozambique and Madagascar	Indian Ocean
North Channel	Ireland and Scotland	Irish Sea and Atlantic Ocean
Hormuz Strait	Iran and Oman	The Gulf of Oman and the Persian Gulf
Bab-el-Mandeb	Djibouti, Yemen, and Eritrea of the Somali Peninsula	The Gulf of Aden and the Red Sea
Ten Degree Channel	Car Nicobar Islands and Little Andaman	Andaman Sea and the Bay of Bengal
Sunda Strait	Java island of Indonesia with its Sumatra island.	Java Sea and the Indian Ocean
Florida Strait	Cuba and the USA	Gulf of Mexico and the Atlantic Ocean

Florida Strait	Cuba and the USA	Gulf of Mexico and the Atlantic Ocean
Bering Strait	Asia from America	The Arctic Ocean and East Pacific ocean
Strait of Gibraltar	Spain and Morocco	The Atlantic Ocean and the Mediterranean Sea
Korea Strait	Japan and South Korea	The East China Sea and the Sea of Japan
Strait of Malacca	Malaysia and Sumatra	The Pacific Ocean to the east with the Indian Ocean to the west
Bonifacio Strait	Corsica island of France and Sardinia islands of Italy	The Tyrrhenian Sea and the Mediterranean Sea
Palk Strait	India and Sri Lanka	The Bay of Bengal in the northeast with the Palk Bay/Arabian Sea in the southwest
Bosphorus Strait	Divides Europe from Asia	The Black Sea to Sea of Marmara
Bass Strait	Tasmania island and mainland Australia	The Great Australian Bight and the Tasman Sea
Davis Strait	Between Greenland and Canada	The Baffin Bay and the Labrador Sea
Jamaica Channel	Jamaica and Hispaniola	The Caribbean Sea and North Atlantic
Hudson Strait	Baffin Island and Labrador	Hudson Bay and the Labrador Sea



**Isthmus:** A narrow strip of land with sea on either side, forming a link between two larger areas of land. The **Isthmus of Panama** is a narrow strip of land at the southernmost end of **Central America**. It lies between the **Pacific Ocean** and the **Caribbean Sea** while linking **North** and **South America**.



### 36. Bali strait

**Join:** Bali Sea & Indian Ocean

**Location:** Indonesia (Bali and Java)



### 35. Straits of Lombok

**Join:** Java Sea & Indian Ocean

**Location:** Indonesia (Bali and Lombok)



### 36. Bali strait

### 34. Kerch Strait

- The Kerch Strait is a strait connecting the **Black Sea** and the **Sea of Azov**.
- It separates the **Kerch Peninsula of Crimea** from the **Taman Peninsula of Russia's Krasnodar Krai**.





### 32. Ten Degree Channel

**Join:** The Andaman Sea and the Bay of Bengal

**Location:** Car Nicobar Islands and Little Andaman



### 33. English Channel

The English Channel is an arm of the Atlantic Ocean that separates **southern England** from **northern France** and links to the southern part of the North Sea by the Strait of Dover at its northeastern end. It is the **busiest shipping area in the world**.





### 31. Jamaica Channel

**Join:** The Caribbean Sea and North Atlantic

**Location:** Jamaica and Hispaniola



### 30. Korea Strait

**Join:** East China Sea and Sea of Japan

**Location:** Japan and South Korea







### 29. Taiwan Strait (Formosa Strait)

**Join:** South China Sea & East China Sea

**Location:** China-Taiwan



### Bohai Strait

The Bohai Sea is connected to the Yellow Sea via the **Bohai Strait**.

The Bohai Sea is a marginal sea which is the north-western extension of the Yellow Sea.





### 27. Tatar Strait

**Join:** Japan Sea & Okhotsk Sea

**Location:** Russia (East Russia-Sakhalin Islands)



### 28. Foveaux Strait

**Join:** South Pacific Ocean

**Location:** New Zealand (South Island- Stewart Island)





**Join:** Japan Sea and Pacific Ocean

**Location:** Japan (Hokkaido-Honshu Island)



### 25. Makkassar Strait

**Join:** Java Sea & Celebeze Sea

**Location:** Indonesia



### 23. Gibraltar Strait

**Join:** Mediterranean Sea & Atlantic Ocean

**Location:** Spain-Morocco

- The Strait of Gibraltar is located at **the southern tip of the Iberian Peninsula**.
- The Strait of Gibraltar is a **narrow strait** that connects the **Atlantic Ocean to the Mediterranean Sea** and separates Gibraltar and Peninsular **Spain in Europe from Morocco in Africa**.
- The two continents are separated by 14.3 kilometers of the **ocean at the Strait's narrowest point**.
- The Spanish side of the Strait is **protected under El Estrecho Natural Park**.
- **On the northern side of the Strait are Spain and Gibraltar**(a British overseas territory in the **Iberian Peninsula**); while **on the southern side are Morocco and Ceuta** (a Spanish autonomous city in northern Africa).
- Due to its location, the Strait is commonly **used for illegal immigration from Africa to Europe**.



### 24. Magellan strait

**Join:** Pacific and South Atlantic Ocean

**Location:** Chile





## 20. Florida Strait

**Join:** Gulf of Mexico and Atlantic Ocean

**Location:** USA-Cuba



## 19. Dover strait

**Join:** English Channel & North Sea

**Location:** England-France

**Strait of Dover** or *Dover Strait* is the narrowest part of the **English Channel**





**17. Davis Strait**

**Join:** Baffin Bay & Atlantic Ocean

**Location:** Greenland-Canada



**18. Denmark Strait**

**Join:** North Atlantic and Arctic Ocean

**Location:** Greenland-Iceland



### 16. Dardanelles Strait

**Join:** Marmara Sea and Aegean Sea

**Location:** Turkey

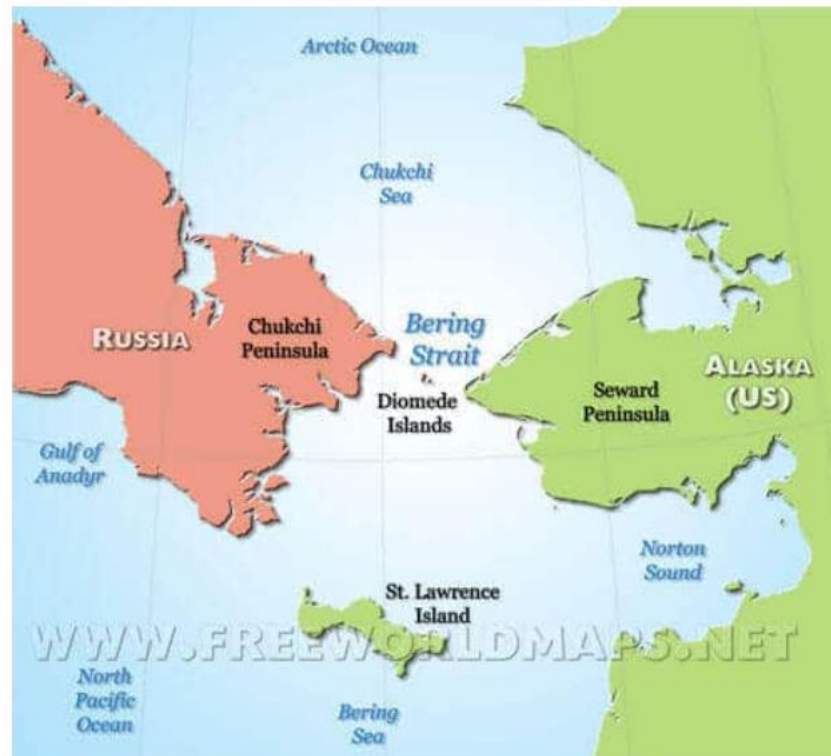




### 13. Bering Strait

**Join:** Bering Sea & Chukchi Sea

**Location:** Alaska-Russia



### 15. Bosphorous Strait

**Join:** Black Sea and Marmara Sea

**Location:** Turkey





## 12. Bass Strait

**Join:** Tasman Sea & South Sea

**Location:** Australia



## 11. Taurus Strait (Torres Strait)

**Join:** Arafura Sea & Gulf of Papua

**Location:** Papua New Guinea — Australia



## 10. North Channel

**Join:** Irish Sea & Atlantic Ocean

**Location:** Ireland-England



### 9. Mozambique Strait

**Join:** Indian Ocean

**Location:** Mozambique -Madagascar





## 8. Cook Strait

**Join:** South Pacific Ocean

**Location:** New Zealand (North & South Islands)



## 6. Otranto Strait

**Join:** Adriatic Sea & Ionian Sea

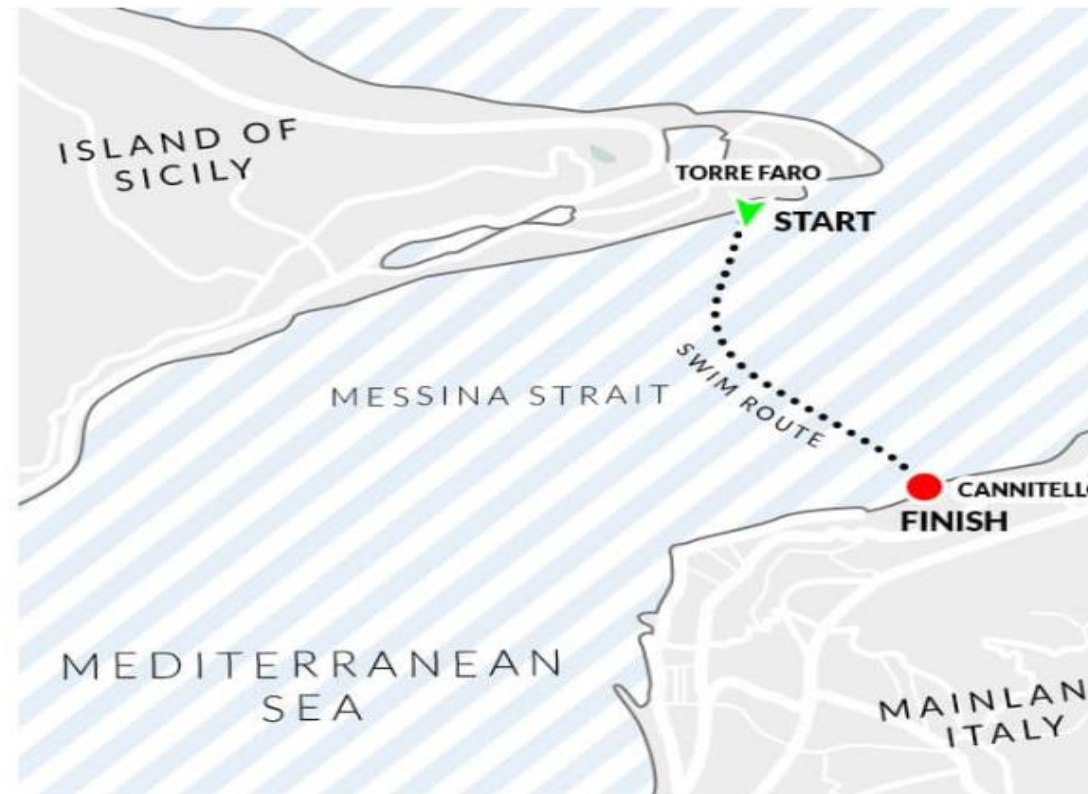
**Location:** Italy-Albania



## 5. Mesina Strait

**Join:** Mediterranean Sea

**Location:** Italy-Sicily



## 7. Bab-el-Mandeb Strait

**Join:** Red Sea & Gulf of Aden

**Location:** Yemen-Djibouti





#### 4. Yucatan Strait

**Join:** Gulf of Mexico and Caribbean Sea

**Location:** Mexico-Cuba





### 3. Sunda Strait

**Join:** Java Sea & Indian Ocean

**Location:** Indonesia



## 2. Palk Strait

**Join:** Palk Bay & Bay of Bengal

**Location:** India-Sri Lanka

