



Share



THE HINDU NEWSPAPER ANALYSIS

50 WORDS DAILY

MOST IMPORTANT VOCABULARY

LIVE  **7:30 AM**

1 SEP 2021



6:30
✓

7:30



**ONE SMALL
POSITIVE
THOUGHT IN
THE MORNING
WILL
CHANGE YOUR DAY**

*Thought of
the day.*

TOPICS WE WOULD COVER

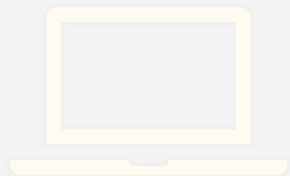
- **CHECK YOUR PROGRESS**

- a) synonyms
- b) antonyms
- c) one word
- d) idioms

- **VOCABULARY FROM ARTICLE + ANALYSIS + spotting errors (Hw)**

LET'S CHECK YOUR PROGRESS

ARE
YOU
READY??



1-5

Time for SYNONYMS



VOCABULARY

Q1. Choose the synonym of '**Inflammatory**'.

1. Calming
2. Mitigating
3. Placating
- ✓ 4. Irritant

0:20

VOCABULARY

Q2. Choose the synonym of 'Relic'.

Antique

back

1. Rear

2. Artefact

3. Modern

4. Ambiguous

0:20

VOCABULARY

Q3. Choose the synonym of
'Epithet'.

0:20

1. Compliment
- ✓ 2. Nickname
3. Praise
4. Alias

VOCABULARY

Q4. Choose the synonym of
'Churlish'.

0:20

1. Gentle
2. Girlish
3. Polite
- 4. Rude**

VOCABULARY

Q5. Choose the synonym of '**Affirm**'.

0:20

1. Negate
2. Nullify
3. Veto
4. Promise

Q6 - Q10

Time for ANTONYMS

(opposite)



Veto = opinion/vote.
right to reject or accept.

VOCABULARY

Q6. Choose the antonym of 'Recur'.

continuous

1. Reoccur
2. Retain
3. Halt
4. Repeat

0:20

Abstain — from
appr. →

VOCABULARY

Q7. Choose the antonym of
Abstain.

- Sub
1. Indulge
 2. Refrain
 3. Abjure
 4. Cease

(to get involved)

0:20

VOCABULARY

Q8. Choose the antonym of
'Overwhelming'.

0:20

1. Profuse
2. Enormous
3. Small
4. Immense

VOCABULARY

Q9. Choose the antonym of '**Assert**'.

0:20

- ~~1. Deny~~
2. Declare
3. Maintain
4. Adduce

Share ✓✓

VOCABULARY

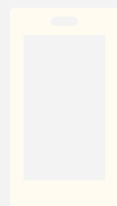
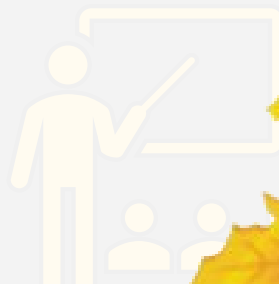
Q10. Choose the antonym of '**Consensus**'.

0:20

1. Harmony
2. Disagreement
3. Agreement
4. Unison

Q 11 - Q 15

Time for ONE WORD



VOCABULARY

0:20

Q11. A game in which no one wins

(1) draw

(2) obsolete — *no longer in use.*

(3) legal

(4) illegal

VOCABULARY

Q12. Shaking movement of the ground

0:20

~~(1) tremor~~

(2) shiver

(3) vibrate

(4) oscillate

(to & fro motion)

VOCABULARY

Repeatedly
Q13. **Li**able to be easily broken.

→ semi-transparent
(1) translucent

(2) brittle

(3) unhealthy

(4) ~~opaque~~ *non-transparent*

0:20

VOCABULARY

Q14. A room or building, for the preservation of plants.

0:20

- (1) plantation
- (2) farmyard
- (3) greenhouse
- (4) plantain

VOCABULARY

Q15. A large number of fish swimming together.

(1) troupe — dancers

(2) swarm — bees

(3) litter — puppies

(4) shoal — fish.

0:20



Time for IDIOMS

VOCABULARY

0:20

Q16. Scientific knowledge is no longer **a closed book** in this 21st century.

- (1) an unopened book
- (2) a covered book
- ~~(3) a mystery~~
- (4) a mysterious book

VOCABULARY

0:20

Q17. It takes **a month of Sundays** to chop all that wood.

(1) a short period

(2) no time

(3) a long time

(4) a special Sunday

VOCABULARY

0:20

Q18. **let sleeping dogs lie**

- (1) dogs can raise tempers
- (2) do not allow dogs to stand
- (3) prevent dog mobility
- ~~(4) do not bring up an old~~
controversial issue

VOCABULARY

0:20

Q19. To get admission in present day educational institutions, all children should be **born with a silver spoon in the mouth.**

- (1) always hold a silver spoon
- (2) be born with silver spoon
- (3) be born in a rich family
- (4) be born to silver spoon manufacturer

VOCABULARY

0:20

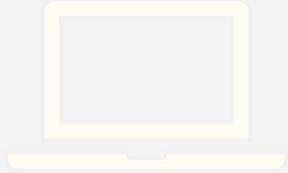
Q20. **a man of straw**

- (1) an unreasonable person
- (2) a man of no substance
- (3) a very active person
- (4) a worthy fellow

SO IT'S TIME

Let's start

Abide
words



ARTICLE

Making out a case for propping up the middle class

Supported/sustained -
serving as a foundation.

recoil/flinch

neglecting

Leaving out a shrinking middle class in policy to handle the deep economic impact of COVID-19 will hamper recovery.

(Separate / set apart)

hamper
destiny/hinder

Nobel laureate (2017) Richard H. Thaler segregates the population into "Econs" and "Humans". Short for 'Homo Economicus', 'Econs' seldom defy economic assumptions of rationality and are flawless decision makers — akin to a preprogrammed machine. But they exist in economic literature only figuratively and are conspic real life.

Economics

tenability / intellect

Some times / Rarely.

moderation

Similar

Spotless

Symbolic

Salient / important / Outstanding



In contrast, a vast majority of people fall under the category of 'Humans'. They rarely behave rationally and are, thus, credulously susceptible to a wide variety of behavioural biases in their decisions. gullible/innocent.

favorably

✓ ✓ ✓
1 — (10) — ??

Planners and issues

Population

What is true for the vast populace is equally applicable to policy planners. Their education, professional training, varied experiences and grass-roots connect notwithstanding, they remain 'Humans' than 'Econs'. Even when their decisions have far-reaching consequences, they are scarcely immune to the 'present bias' and entrust greater weight to the payoffs that are closer to the present time, thus favouring 'instant ambitions' over 'enduring economic gains'. Similarly, they could be amenable to 'overconfidence', 'optimism' and 'framing effects' and get swayed by the way information is presented to them.

governable

(affected)

Their thought processes may also be hinge on the 'confirmation bias' tempting them to search, interpret, and recall information which support or validate their predisposition. Even as they mean no malice, they might be manoeuvred by 'group reinforcement' and 'inter-group opposition'.

Cognitive distortion such as 'availability heuristic' may, concurrently impel them to believe that what comes to mind more easily is likely to be a far more accurate reflection of reality.

What gives them further confidence is the 'illusion of control' leading to overestimating their ability to control events or to take mid-course correction if the designed policy fails to deliver the desired result.



Makendra's



THE HINDU
VOCABULARY

1) propping up (verb)

–to hold up or serve as a foundation for.

stayed, supported, sustained, undergirded, underpinned,
upheld

2) shrinking (phrase) – recoil, retreat, flinch, cower

3) Hamper (verb)

–hinder, obstruct, impede, inhibit, retard, balk, thwart,
foil.

4) segregates (verb)

– separate, set apart, isolate, quarantine, insulate

5) **Econs (noun)** — *people thinking & acting rationally.*

- refers to economics, a social science that analyzes the production, distribution, & consumption of goods & services.

6) **rationality (noun)**

- tenability, intellect, moderateness, reason, grounds

7) **flawless (adj)**

- perfect, unblemished, unmarked, unimpaired, whole

8) **akin (adj)**

- similar, related, corresponding, comparable, parallel

9) figuratively (adj)

– symbolic, allegorical, representative, emblematic, fanciful

10) conspicuous (adj)

– noticeable, outstanding, remarkable, salient

11) credulously (adj)

– confidently, sanguinely, approvingly, favorably

12) susceptible (noun)

– gullible, innocent, ingenuous, naïve, vulnerable

13) populace (adjective)

- population, inhabitants, residents, natives, occupants

14) grass-roots (phrase)

- the most basic level of an activity or organization.

15) amenable (adj)

- compliant, acquiescent, biddable, manageable, controllable, governable, persuadable

16) swayed (verb)

- influence, affect, bias, persuade

For Your Any Type of English
Related Queries Join
Telegram Channel :

English Mahendras Live
or
(SrayaMahendras)